

GROUP BTH-1

SEALANTS FOR USE UNDER BARRITHANE VP ONLY

CCW-LM-800XL

OTHERS AS APPROVED BY CARLISLE

GROUP BTH-2

SEALANTS FOR USE OVER OR UNDER BARRITHANE VP

BARRIBOND

CCW-201

CARLISLE UNIVERSAL SINGLE PLY SEALANT

CCW-GREENBOND

CARLISLE SURE-SEAL LAP SEALANT

OTHERS AS APPROVED BY CARLISLE

GROUP BTH-3

SILICONE SEALANTS FOR USE OVER BARRITHANE VP ONLY

DOW 756, 758, 790

GE SCS 2000, 9000,

SPECTREM 1, SPECTREM 3

GROUP BTH-A

MASTIC TYPE INSULATION ADHESIVES – APPROVED FOR BONDING
FOAM BOARD TO CURED BARRITHANE VP

BARRIBOND

CCW-LM-800XL

CCW-GREENBOND

OTHERS AS APPROVED BY CARLISLE

NOTES:

FOLLOW
APPLICATION
INSTRUCTIONS BY
SEALANT
MANUFACTURER

DO NOT INSTALL 1
PART SEALANTS
INTO JOINTS
EXCEEDING ½ INCH
DEPTH

BTH-0A

BARRITHANE VP
APPROVED SEALANTS



© 2018 CARLISLE CORPORATION

Material	Status	Comments
Plywood	Recommended	Moisture content of wood shall be below 20%.
OSB	Recommended	
Lumber—standard, pressure —treated or fire—treated	Recommended	
Glass—Faced Gypsum Sheathing — Example: Dens—Glass Gold	Recommended	Coat raw edge of gypsum with CCW contact adhesive
Plain Gypsum Sheathing — Example: USG Fiberock	Recommended	Coat raw edge of gypsum with CCW contact adhesive
Structural steel	Recommended	Remove loose rust and scale.
Concrete	Recommended	Allow concrete to cure 3 days minimum.
Concrete block, brick and stone	Recommended	Joints shall be free of voids, struck flush and mortar droppings removed from ties and surfaces.
Aluminum, (sheet, foil, and extrusion)	Recommended	
Un—faced EPS Insulation	Recommended	
Poly—faced EPS and XPS Insulation	Recommended	
Copper Flashing	Recommended	
Stainless Flashing	Recommended	
Ridgid PVC Window Extrusion	Recommended	
Painted Surfaces	Recommended	
2# Closed Cell Spray Foam, Full Coverage dispense from Foam Rig	Recommended	Recommended, provided that maximum thickness per pass as dictated by foam manufacturer is followed. Excessive heat build and shrinkage of foam may cause damage.

Notes:

All surfaces shall be clean, sound and dry.

These recommendations are intended to assist the design professional and the installer to determine compatibility of Barrithane VP with materials commonly encountered in building assemblies. All Carlisle products shall be installed as indicated in drawings and literature. Recommendations in this document do not extend any approval for use of Carlisle products beyond the provisions in Carlisle's warranties.

BTH—OB

ADHESION AND CHEMICAL COMPATIBILITY OF BARRITHANE VP WITH GENERIC BUILDING MATERIALS



© 2019 CARLISLE CORPORATION

Material	Contact	Comments
Strong acids and bases (examples: Muriatic Acid, Lye)	Not Permitted	Membrane can be damaged by exposure to these.
Oil and Grease (examples: vegetable oil, animal fat, motor oil)	Not Permitted	Oil or grease will soften membrane.
Organic solvents (examples: toluene, mineral spirits)	Limited Exposure	Solvent-based sealants, coatings and primers can be applied to cured Barrithane VP. However, solvents must be allowed to flash from these products before covering with Barrithane VP. Soaking Barrithane VP membrane with solvents or solvent-based cleaners is not recommended.
Bird droppings	Limited Exposure	At ledges and similar areas, clean accumulated bird droppings and nest materials from Barrithane VP with detergent solution before covering with cladding system.
Soil	Permitted	Barrithane VP is for use above grade. Installed product can get dirty. Barrithane VP is chemically resistant to soil.
Detergent solutions (examples: soap and water, citrus cleaner)	Permitted	Allow full cure before exposure.
Rain water	Permitted	Allow full cure before exposure.
Salt water spray/mist	Permitted	Allow full cure before exposure.
Standing water	Limited Exposure	Barrithane VP is recommended for above grade use, in vertical wall assemblies. It will withstand intermittent standing water, suitable for use in window sills and similar horizontal projections as shown in details.

Notes:

These recommendations are intended to assist the design professional and the installer to determine compatibility of Barrithane VP with materials commonly encountered in building assemblies. All Carlisle products shall be installed as indicated in drawings and literature. Recommendations in this document do not extend any approval for use of Carlisle products beyond the provisions in Carlisle's warranties.

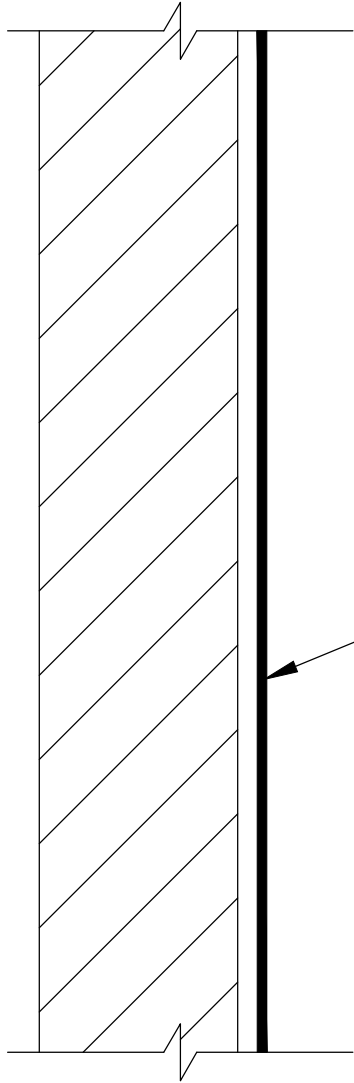
BTH-OC

CHEMICAL RESISTANCE OF BARRITHANE VP



© 2018 CARLISLE CORPORATION

EXTERIOR GYPSUM
OR WOOD SHEATHING



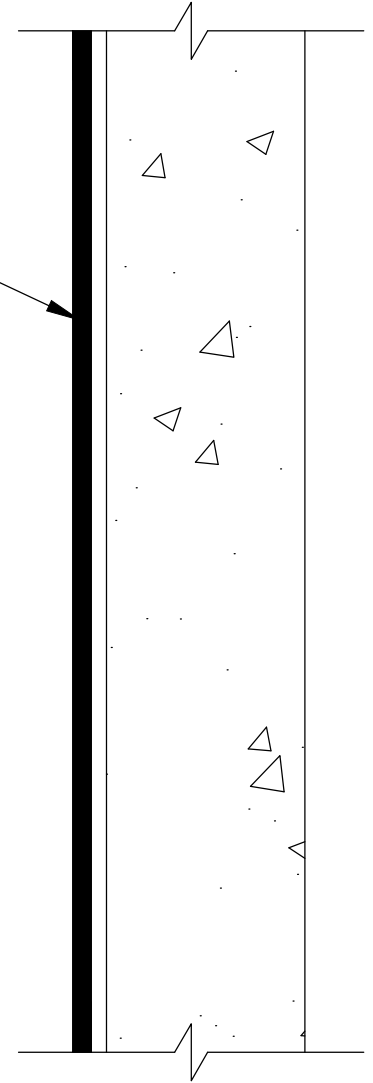
BARRITHANE VP,
MINIMUM 15–25 WET MILS

BARRITHANE VP, SINGLE
OR MULTIPLE COATS,
30–50 WET MILS

NOTES:

1. FOR MULTI-COAT APPLICATION, ALLOW
PREVIOUS COAT TO DRY FIRM BEFORE
APPLICATION OF SUBSEQUENT COAT

CONCRETE OR
MASONRY SUBSTRATE



AS A MANUFACTURER OF CONSTRUCTION MATERIALS,
CARLISLE, DOES NOT ASSUME RESPONSIBILITY FOR ERRORS
IN DESIGN OR ENGINEERING. ARCHITECT OR OWNERS
REPRESENTATIVE MUST VERIFY SUITABILITY OF DETAILS.

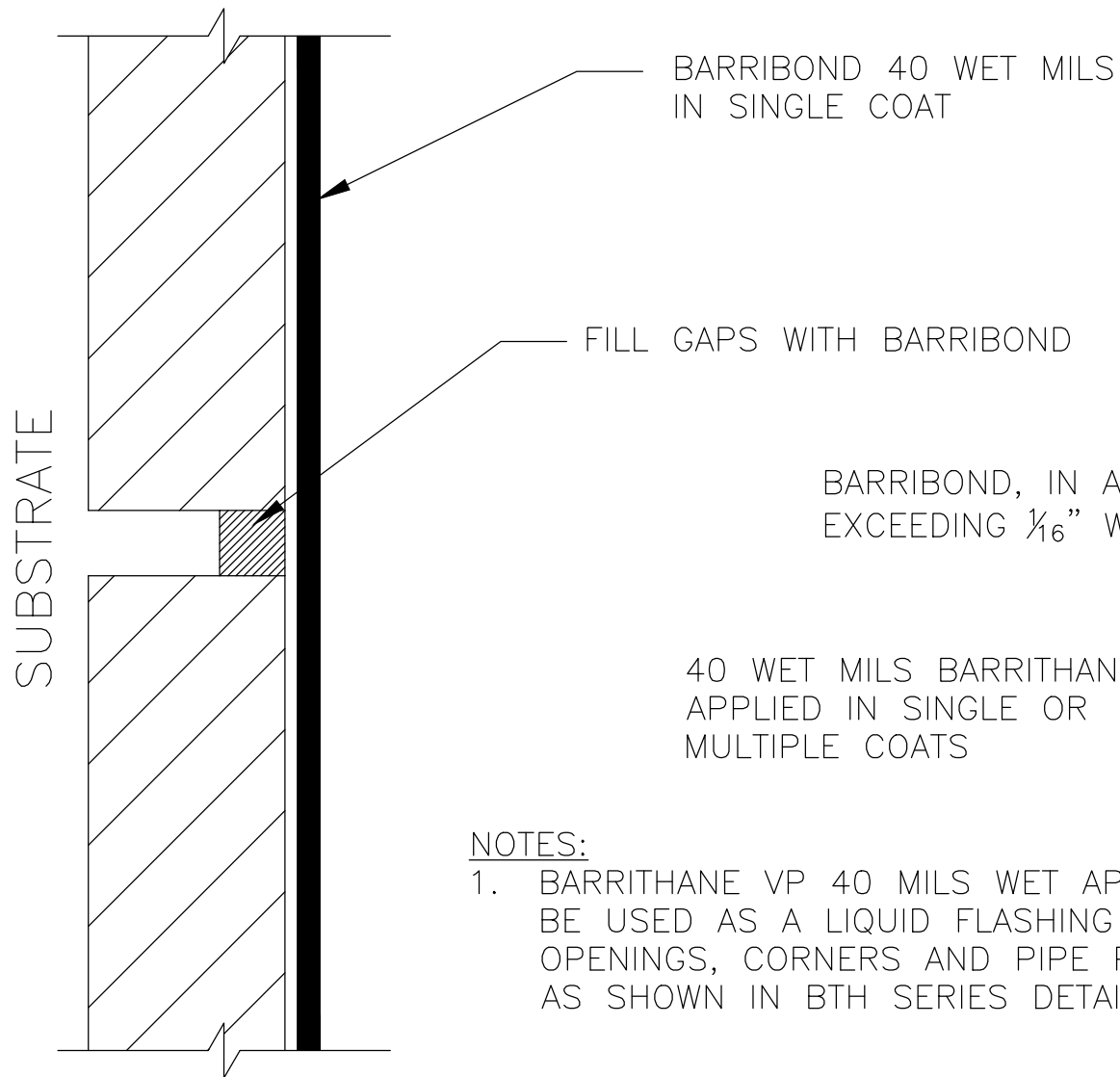
BTH–1A

BARRITHANE VP COVERAGE

CARLISLE
COATINGS & WATERPROOFING

© 2018 CARLISLE CORPORATION

BARRIBOND TROWEL APPLICATION



NOTES:

1. BARRITHANE VP 40 MILS WET APPLICATION CAN BE USED AS A LIQUID FLASHING IN WINDOW OPENINGS, CORNERS AND PIPE PENETRATIONS AS SHOWN IN BTH SERIES DETAILS

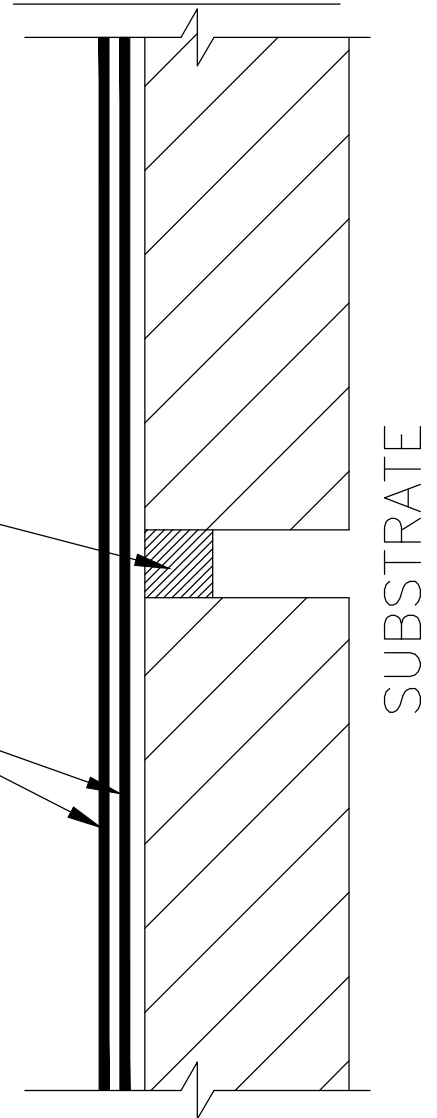
BARRITHANE VP ROLLER OR BRUSH APPLICATION

BARRIBOND 40 WET MILS
IN SINGLE COAT

FILL GAPS WITH BARRIBOND

BARRIBOND, IN ALL GAPS
EXCEEDING $\frac{1}{16}$ " WIDTH.

40 WET MILS BARRITHANE VP
APPLIED IN SINGLE OR
MULTIPLE COATS



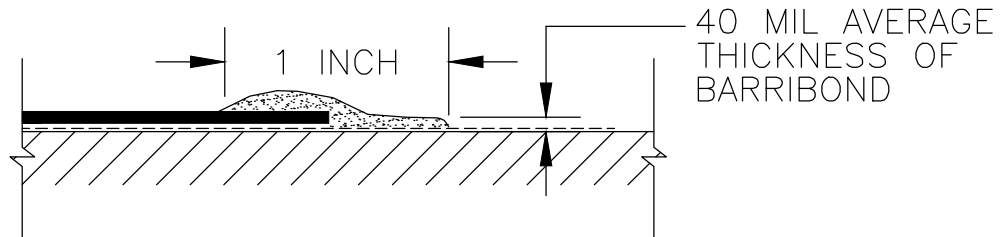
AS A MANUFACTURER OF CONSTRUCTION MATERIALS,
CARLISLE, DOES NOT ASSUME RESPONSIBILITY FOR ERRORS
IN DESIGN OR ENGINEERING. ARCHITECT OR OWNERS
REPRESENTATIVE MUST VERIFY SUITABILITY OF DETAILS.

BTH-1B

LIQUID FLASHING APPLICATION

CARLISLE
COATINGS & WATERPROOFING

© 2018 CARLISLE CORPORATION



BARRITHANE VP OVER AVB DETAIL STRIP

CCW CONTACT ADHESIVE

CCW-705, 705FR-A
OR CCW-705-TWF

BARRIBOND, BTH-1
OR BTH-2 APPROVED
SEALANT (REF BTH-0A)

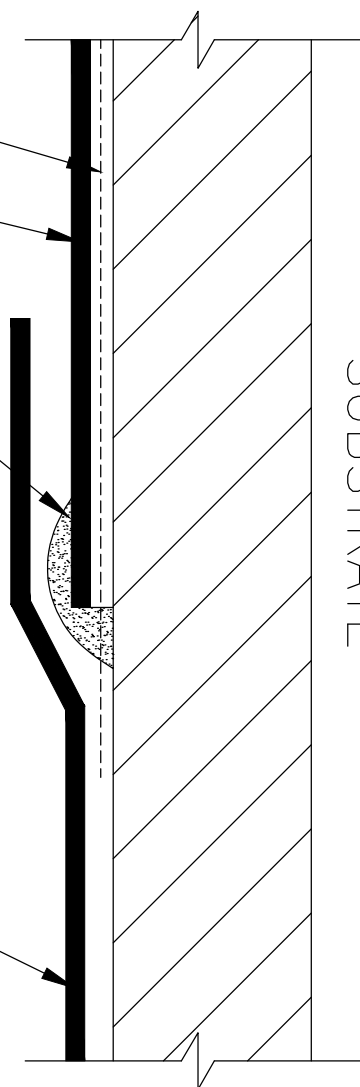
NOTES:

1. CCW CONTACT ADHESIVE SHALL EXTEND 1 INCH MINIMUM BEYOND EDGE OF AVB STRIP DETAIL
2. BARRITHANE VP SYSTEM SHALL LAP 2 INCHES MINIMUM ONTO AVB STRIP DETAIL

MINIMUM
2 INCHES
MINIMUM
1 INCH

BARRITHANE VP, SINGLE
OR MULTIPLE COATS
(REF BTH-1A)

SUBSTRATE



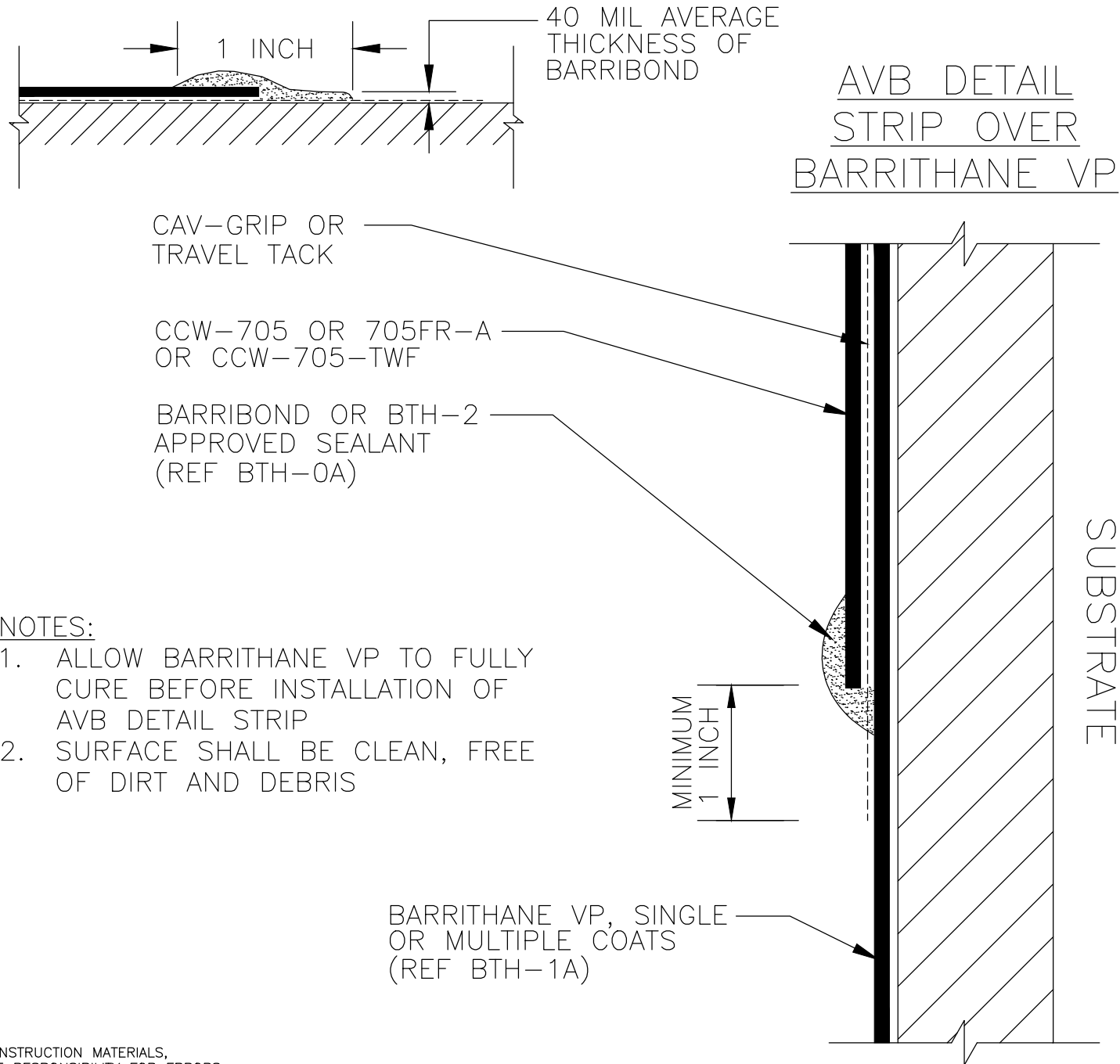
AS A MANUFACTURER OF CONSTRUCTION MATERIALS, CARLISLE, DOES NOT ASSUME RESPONSIBILITY FOR ERRORS IN DESIGN OR ENGINEERING. ARCHITECT OR OWNERS REPRESENTATIVE MUST VERIFY SUITABILITY OF DETAILS.

BTH-2A

BARRITHANE VP/AVB DETAIL
STRIP TERMINATION 1

CARLISLE
COATINGS & WATERPROOFING

© 2018 CARLISLE CORPORATION



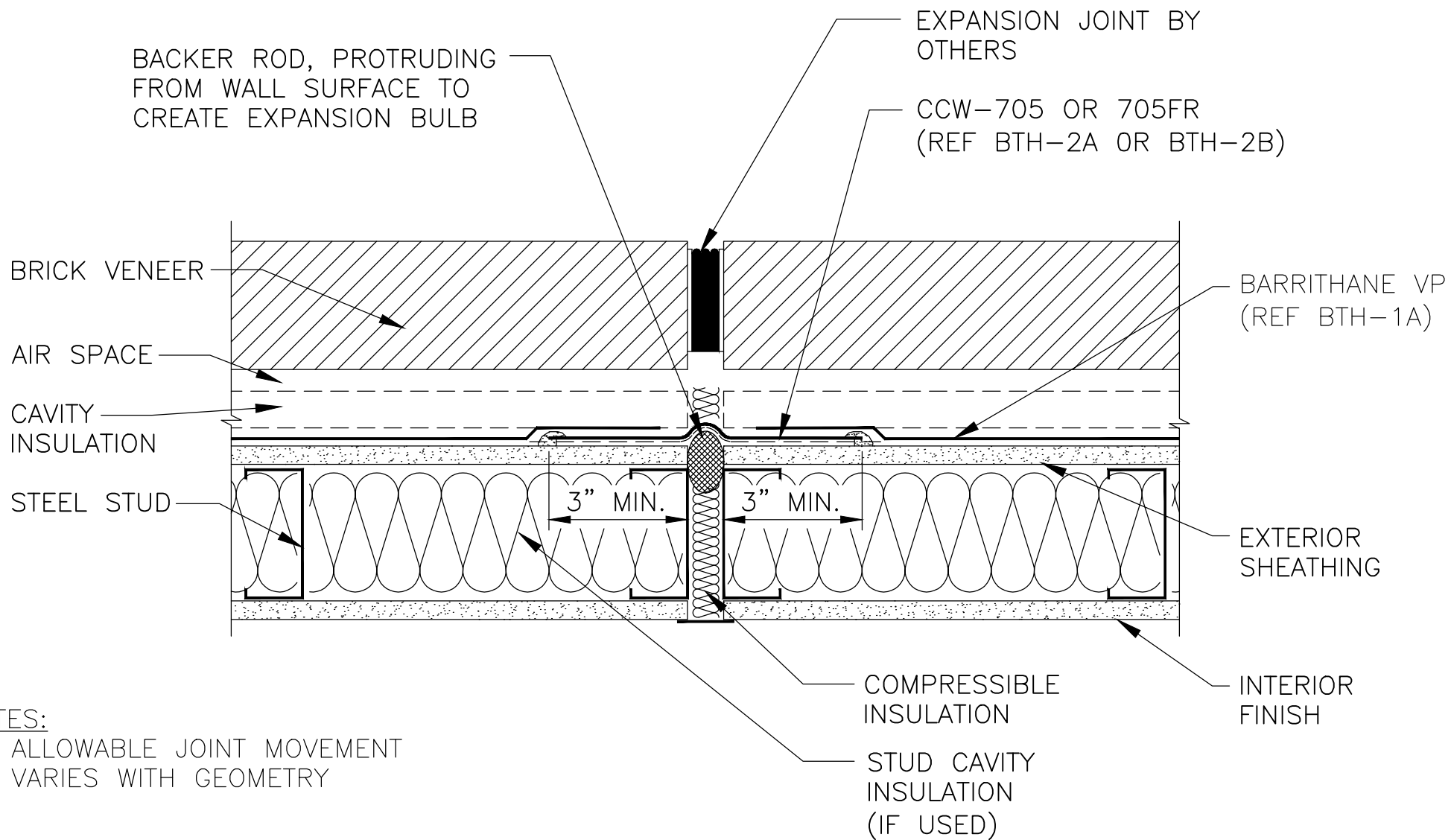
AS A MANUFACTURER OF CONSTRUCTION MATERIALS, CARLISLE, DOES NOT ASSUME RESPONSIBILITY FOR ERRORS IN DESIGN OR ENGINEERING. ARCHITECT OR OWNERS REPRESENTATIVE MUST VERIFY SUITABILITY OF DETAILS.

BTH-2B

BARRITHANE VP/AVB DETAIL STRIP TERMINATION 2

CARLISLE
COATINGS & WATERPROOFING

© 2018 CARLISLE CORPORATION



NOTES:

1. ALLOWABLE JOINT MOVEMENT VARIES WITH GEOMETRY

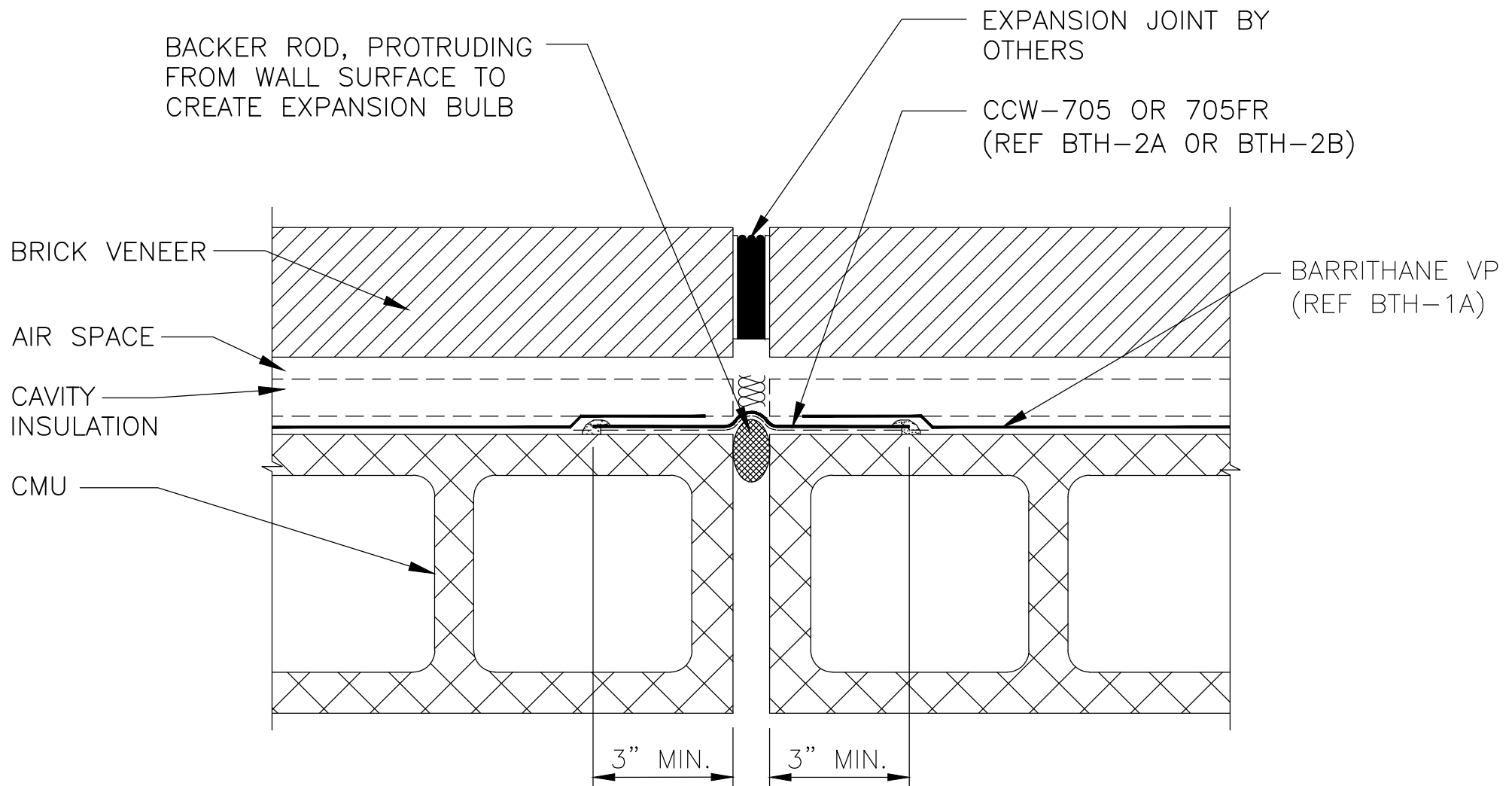
AS A MANUFACTURER OF CONSTRUCTION MATERIALS, CARLISLE, DOES NOT ASSUME RESPONSIBILITY FOR ERRORS IN DESIGN OR ENGINEERING. ARCHITECT OR OWNERS REPRESENTATIVE MUST VERIFY SUITABILITY OF DETAILS.

BTH-3A

EXTERIOR SHEATHING VERTICAL EXPANSION JOINT

CARLISLE
COATINGS & WATERPROOFING

© 2018 CARLISLE CORPORATION



NOTES:

1. ALLOWABLE JOINT MOVEMENT VARIES WITH GEOMETRY

AS A MANUFACTURER OF CONSTRUCTION MATERIALS, CARLISLE, DOES NOT ASSUME RESPONSIBILITY FOR ERRORS IN DESIGN OR ENGINEERING. ARCHITECT OR OWNERS REPRESENTATIVE MUST VERIFY SUITABILITY OF DETAILS.

BTH-3B

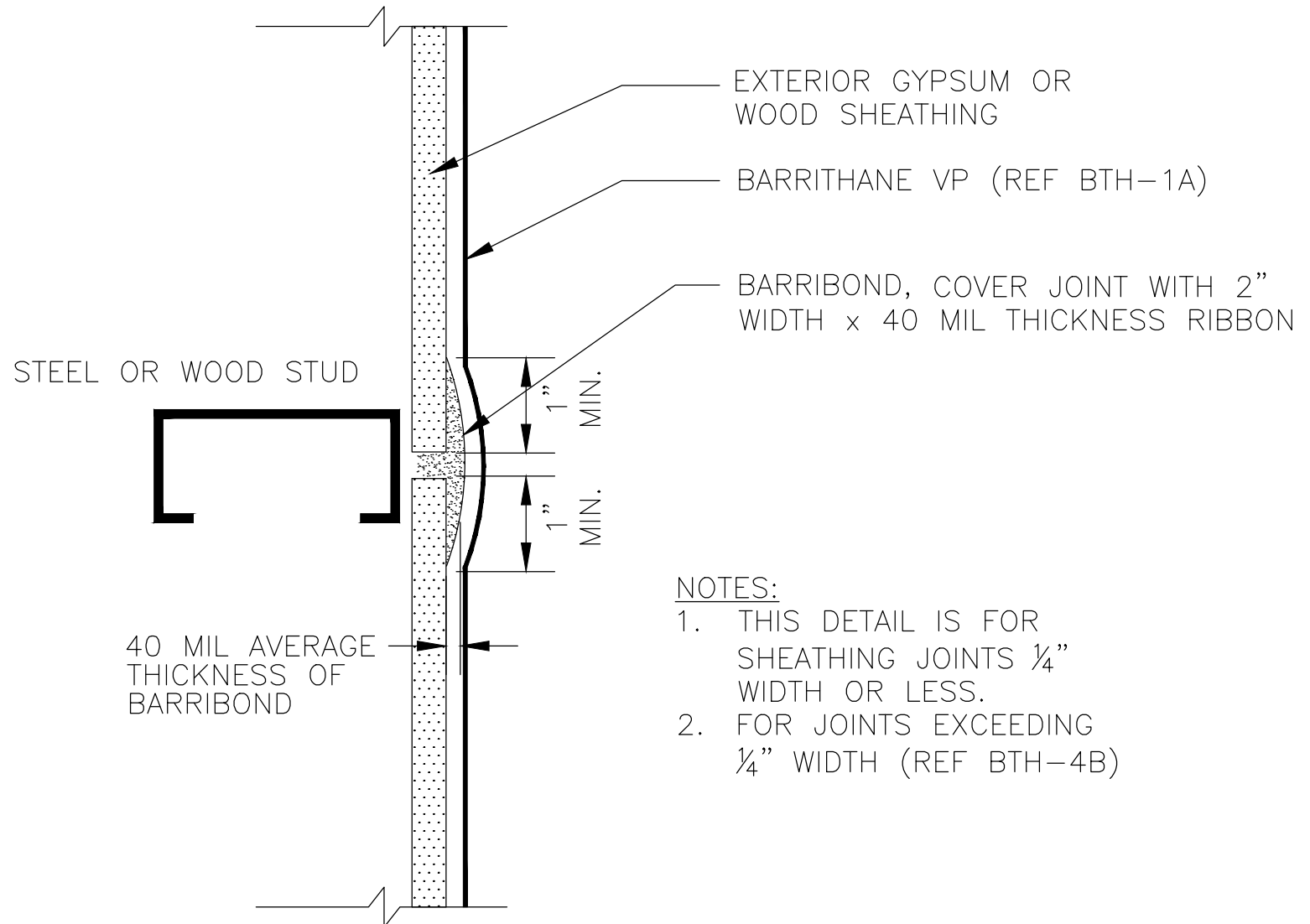
BARRITHANE VP
CMU EXPANSION JOINT

CARLISLE
COATINGS & WATERPROOFING

© 2018 CARLISLE CORPORATION

©2018 CARLISLE CORPORATION

SHEATHING JOINTS PREPPED WITH BARRIBOND



NOTES:

1. THIS DETAIL IS FOR
SHEATHING JOINTS $\frac{1}{4}$ "
WIDTH OR LESS.
2. FOR JOINTS EXCEEDING
 $\frac{1}{4}$ " WIDTH (REF BTH-4B)

AS A MANUFACTURER OF CONSTRUCTION MATERIALS,
CARLISLE, DOES NOT ASSUME RESPONSIBILITY FOR ERRORS
IN DESIGN OR ENGINEERING. ARCHITECT OR OWNERS
REPRESENTATIVE MUST VERIFY SUITABILITY OF DETAILS.

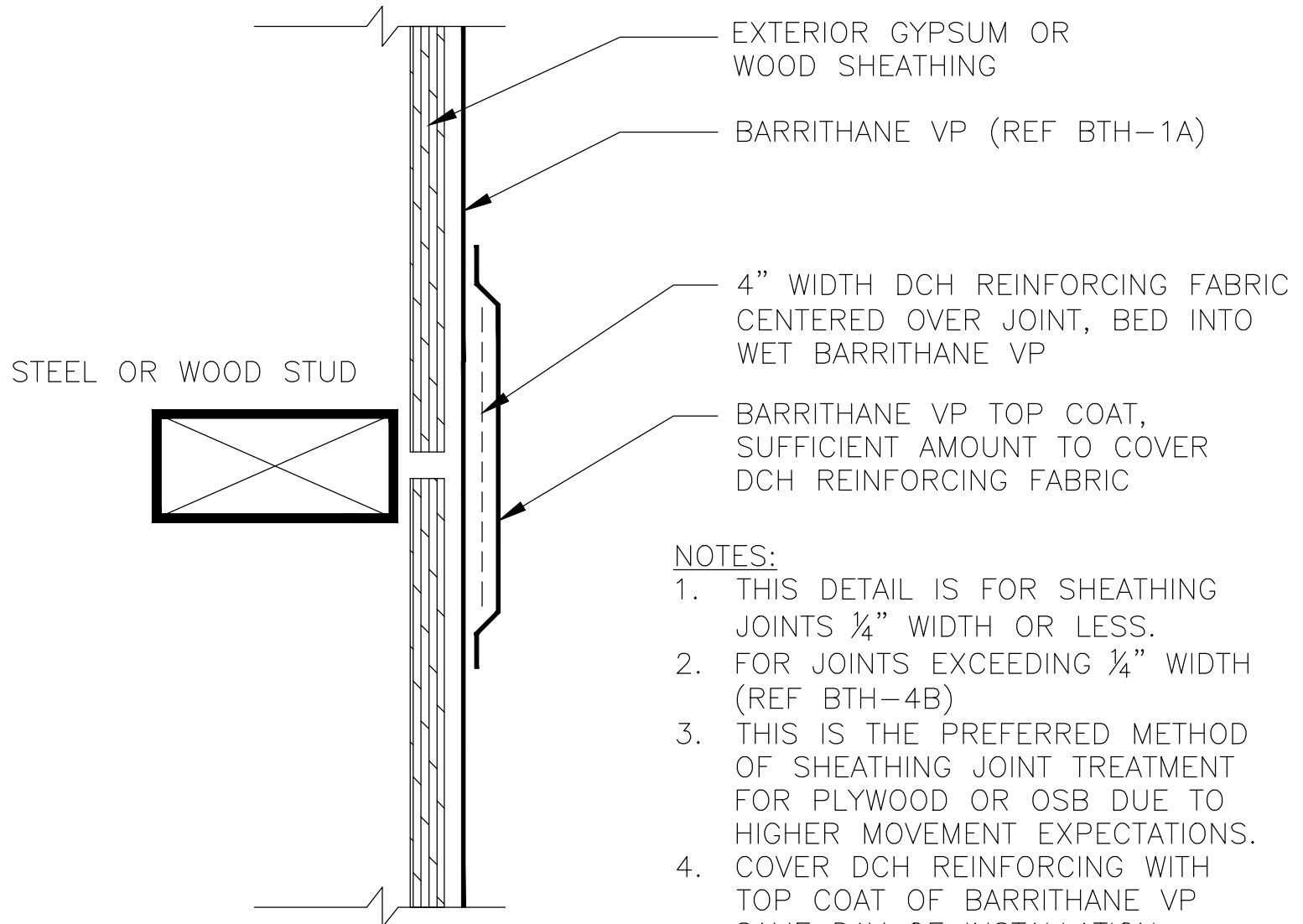
BTH-4A.1

BARRITHANE VP
SHEATHING JOINTS-OPTION 1

CARLISLE
COATINGS & WATERPROOFING

© 2019 CARLISLE CORPORATION

SHEATHING JOINTS PREPPED WITH EMBEDDED REINFORCEMENT



NOTES:

1. THIS DETAIL IS FOR SHEATHING JOINTS $\frac{1}{4}$ " WIDTH OR LESS.
2. FOR JOINTS EXCEEDING $\frac{1}{4}$ " WIDTH (REF BTH-4B)
3. THIS IS THE PREFERRED METHOD OF SHEATHING JOINT TREATMENT FOR PLYWOOD OR OSB DUE TO HIGHER MOVEMENT EXPECTATIONS.
4. COVER DCH REINFORCING WITH TOP COAT OF BARRITHANE VP SAME DAY OF INSTALLATION.

AS A MANUFACTURER OF CONSTRUCTION MATERIALS, CARLISLE, DOES NOT ASSUME RESPONSIBILITY FOR ERRORS IN DESIGN OR ENGINEERING. ARCHITECT OR OWNERS REPRESENTATIVE MUST VERIFY SUITABILITY OF DETAILS.

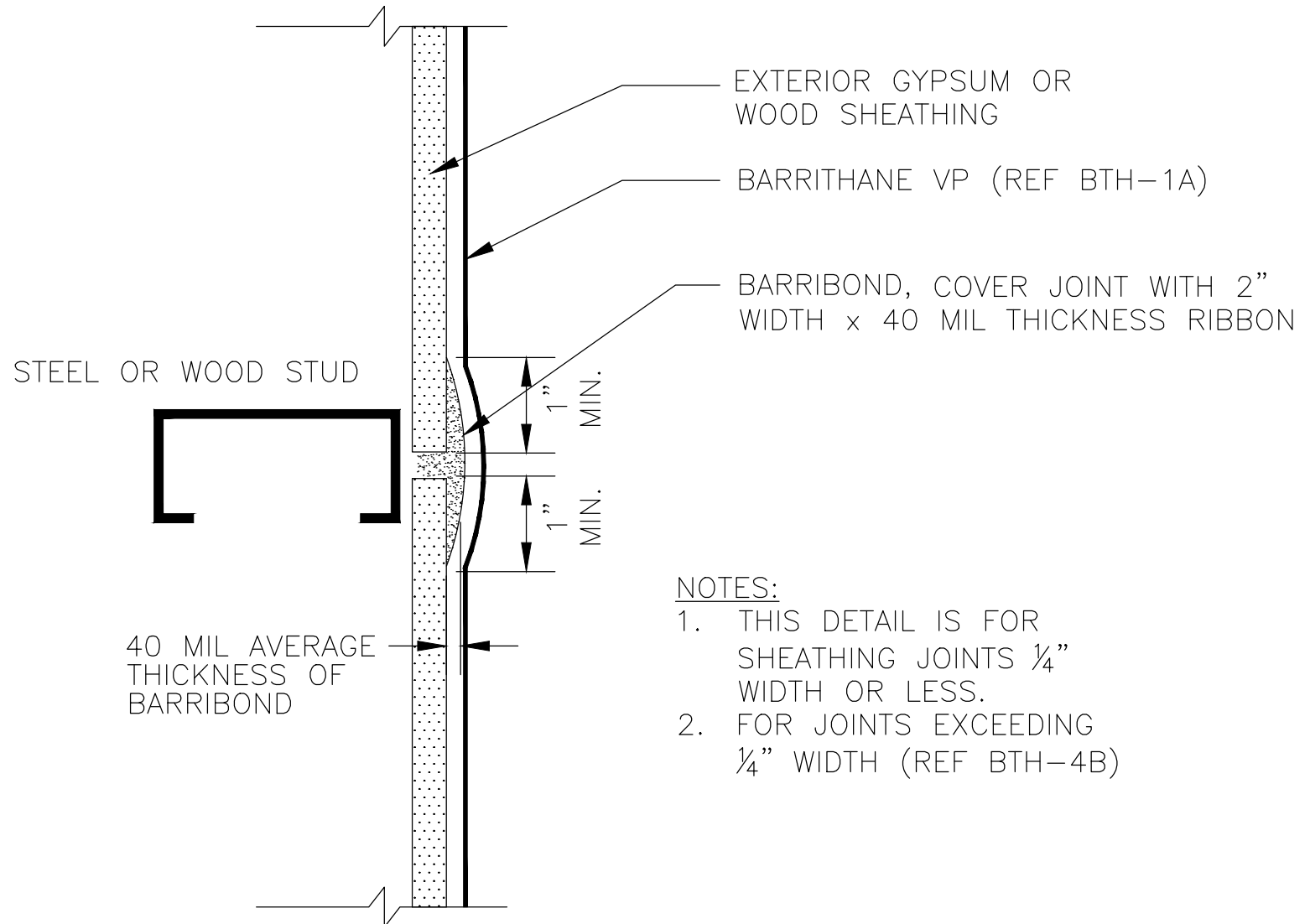
BTH-4A.2

BARRITHANE VP
SHEATHING JOINTS-OPTION 2

CARLISLE
COATINGS & WATERPROOFING

© 2019 CARLISLE CORPORATION

SHEATHING JOINTS PREPPED WITH BARRIBOND



NOTES:

1. THIS DETAIL IS FOR SHEATHING JOINTS $\frac{1}{4}$ " WIDTH OR LESS.
2. FOR JOINTS EXCEEDING $\frac{1}{4}$ " WIDTH (REF BTH-4B)

AS A MANUFACTURER OF CONSTRUCTION MATERIALS, CARLISLE, DOES NOT ASSUME RESPONSIBILITY FOR ERRORS IN DESIGN OR ENGINEERING. ARCHITECT OR OWNERS REPRESENTATIVE MUST VERIFY SUITABILITY OF DETAILS.

BTH-4A

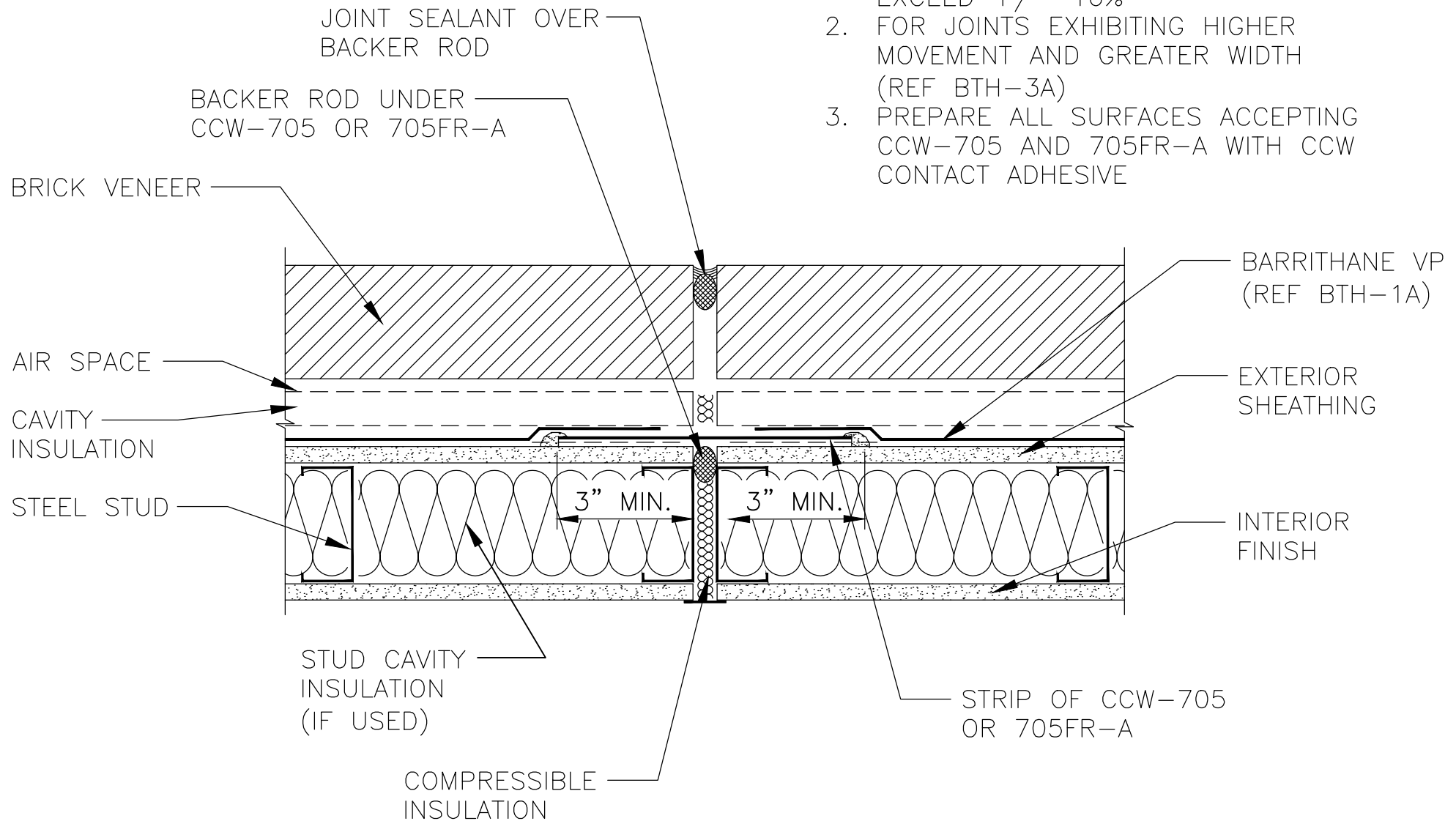
BARRITHANE VP
SHEATHING JOINTS

CARLISLE
COATINGS & WATERPROOFING

© 2018 CARLISLE CORPORATION

NOTES:

1. CONTROL JOINT MOVEMENT SHALL NOT EXCEED $\pm 10\%$
2. FOR JOINTS EXHIBITING HIGHER MOVEMENT AND GREATER WIDTH (REF BTH-3A)
3. PREPARE ALL SURFACES ACCEPTING CCW-705 AND 705FR-A WITH CCW CONTACT ADHESIVE



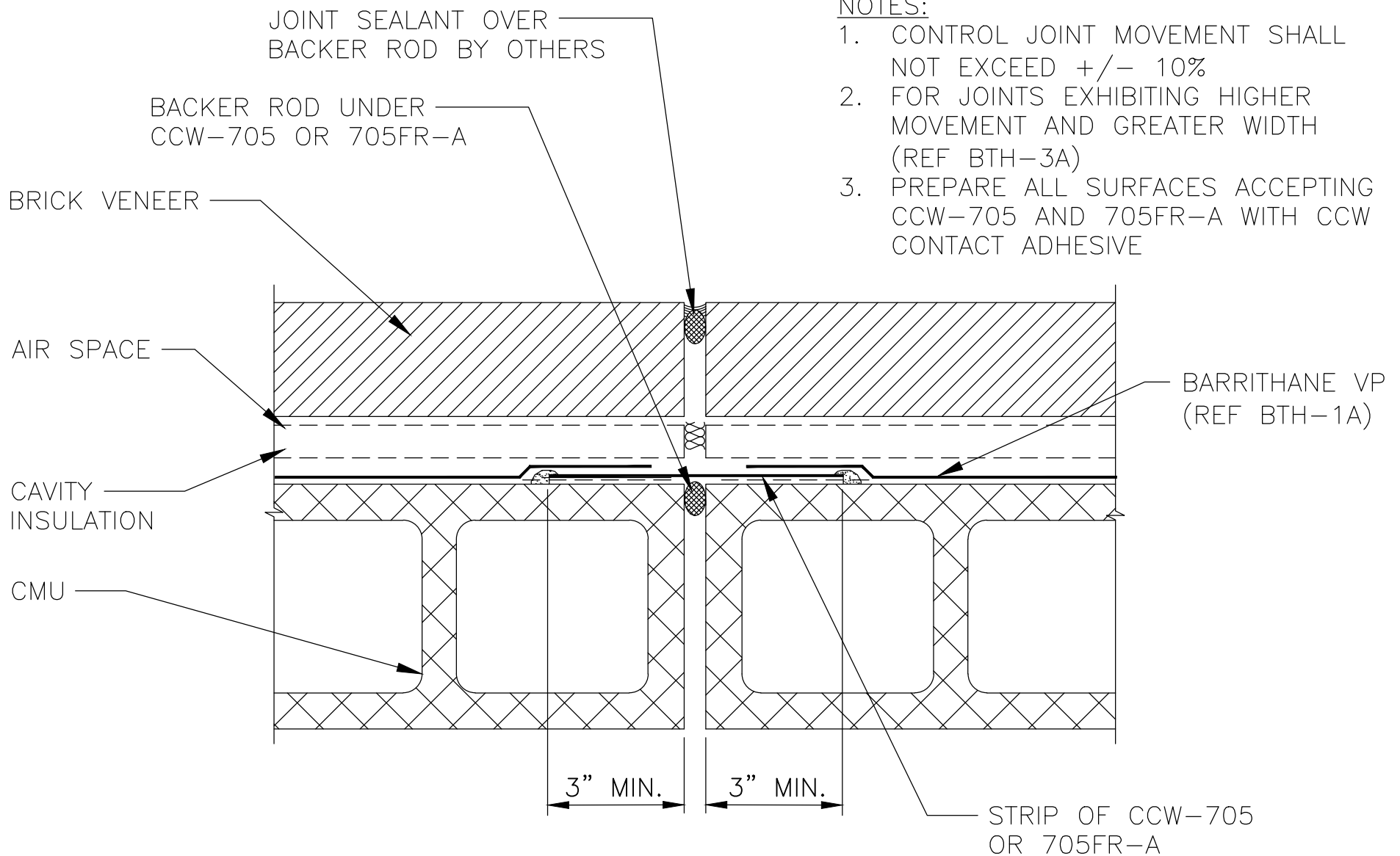
AS A MANUFACTURER OF CONSTRUCTION MATERIALS, CARLISLE, DOES NOT ASSUME RESPONSIBILITY FOR ERRORS IN DESIGN OR ENGINEERING. ARCHITECT OR OWNERS REPRESENTATIVE MUST VERIFY SUITABILITY OF DETAILS.

BTH-4B

EXTERIOR SHEATHING VERTICAL CONTROL JOINT



© 2018 CARLISLE CORPORATION



NOTES:

1. CONTROL JOINT MOVEMENT SHALL NOT EXCEED $\pm 10\%$
2. FOR JOINTS EXHIBITING HIGHER MOVEMENT AND GREATER WIDTH (REF BTH-3A)
3. PREPARE ALL SURFACES ACCEPTING CCW-705 AND 705FR-A WITH CCW CONTACT ADHESIVE

AS A MANUFACTURER OF CONSTRUCTION MATERIALS, CARLISLE, DOES NOT ASSUME RESPONSIBILITY FOR ERRORS IN DESIGN OR ENGINEERING. ARCHITECT OR OWNERS REPRESENTATIVE MUST VERIFY SUITABILITY OF DETAILS.

BTH-4C

BARRITHANE VP
CMU CONTROL JOINT

CARLISLE
COATINGS & WATERPROOFING

© 2018 CARLISLE CORPORATION

BARRIBOND OR BTH-3
APPROVED SEALANT
(REF BTH-0A)

WRAP ROUGH OPENING
AS SHOWN IN BTH-5D,
BTH-5E OR BTH-5G

DO NOT BLOCK WEEPS
OR WEEP PATH

METAL PAN FLASHING
(OPTIONAL)

3" MIN.

40 MIL BARRITHANE VP,
BARRIBOND, CCW-705,
OR 705FR-A
(REF BTH-1B,
BTH-2A OR BTH-2B)

BARRITHANE VP
(REF BTH-1A)

NOTES:

1. PREPARE ALL SURFACES
ACCEPTING CCW-705
AND 705FR-A WITH
CCW CONTACT ADHESIVE

AS A MANUFACTURER OF CONSTRUCTION MATERIALS,
CARLISLE, DOES NOT ASSUME RESPONSIBILITY FOR ERRORS
IN DESIGN OR ENGINEERING. ARCHITECT OR OWNERS
REPRESENTATIVE MUST VERIFY SUITABILITY OF DETAILS.

BTH-5A

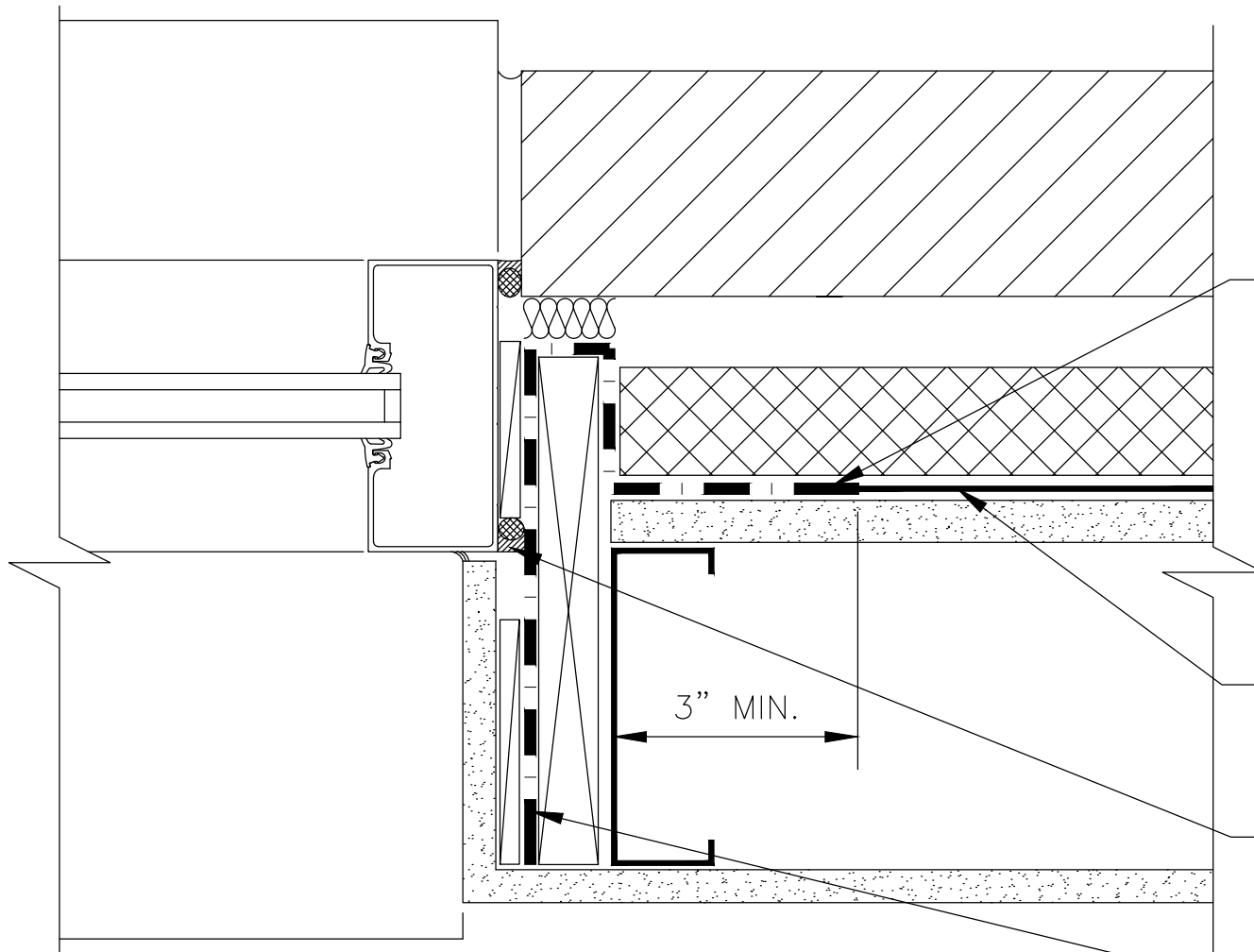
BARRITHANE VP
PUNCHED WINDOW — SILL

CARLISLE
COATINGS & WATERPROOFING

© 2019 CARLISLE CORPORATION

NOTES:

1. PREPARE ALL SURFACES
ACCEPTING CCW-705 AND
705FR-A WITH CCW
CONTACT ADHESIVE



40 MIL BARRITHANE VP,
BARRIBOND, CCW-705,
OR 705FR-A
(REF BTH-1B,
BTH-2A OR BTH-2B)

BARRITHANE VP
(REF BTH-1A)

BARRIBOND OR BTH-3 APPROVED
SEALANT (REF BTH-0A)

WRAP ROUGH OPENING
AS SHOWN IN BTH-5D,
BTH-5E OR BTH-5G

3" MIN.

AS A MANUFACTURER OF CONSTRUCTION MATERIALS,
CARLISLE, DOES NOT ASSUME RESPONSIBILITY FOR ERRORS
IN DESIGN OR ENGINEERING. ARCHITECT OR OWNERS
REPRESENTATIVE MUST VERIFY SUITABILITY OF DETAILS.

BTH-5B

BARRITHANE VP
PUNCHED WINDOW — JAMB

CARLISLE
COATINGS & WATERPROOFING

© 2019 CARLISLE CORPORATION

40 MIL BARRITHANE VP,
BARRIBOND, CCW-705,
OR 705FR-A
(REF BTH-1B,
BTH-2A OR BTH-2B)

WRAP ROUGH OPENING
AS SHOWN IN BTH-5D,
BTH-5E OR BTH-5G

BARRIBOND OR BTH-3
APPROVED SEALANT
(REF BTH-0A)

3" MIN.

BARRITHANE VP
(REF BTH-1A)

BARRIBOND OR BTH-2
APPROVED SEALANT
(REF BTH-0A OR BTH-2B)

WEEPS

CCW-705-TWF (TERMINATE
MIN. 1/2" FROM EXTERIOR)

METAL DRIP EDGE
EMBEDDED IN SEALANT

NOTES:

1. PREPARE ALL SURFACES
ACCEPTING CCW-705,
705FR-A AND
CCW-705-TWF WITH
CCW CONTACT ADHESIVE

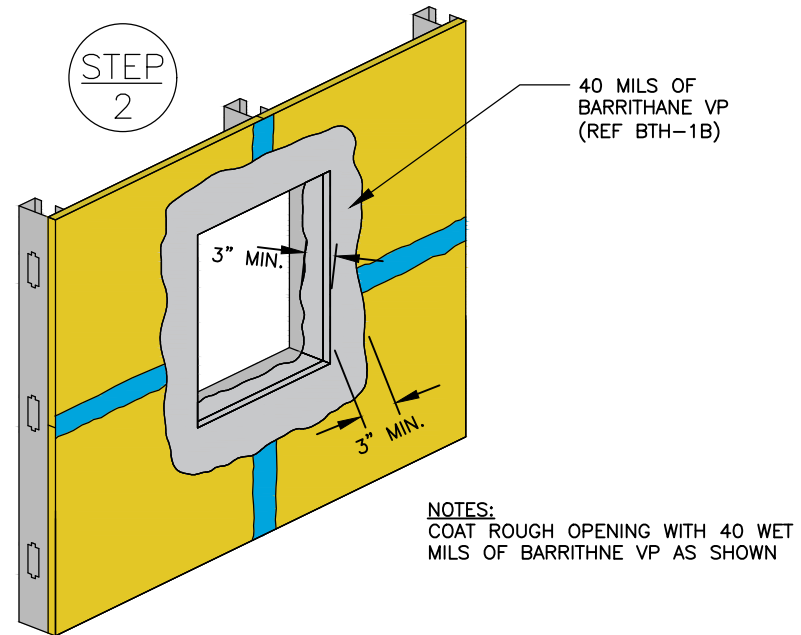
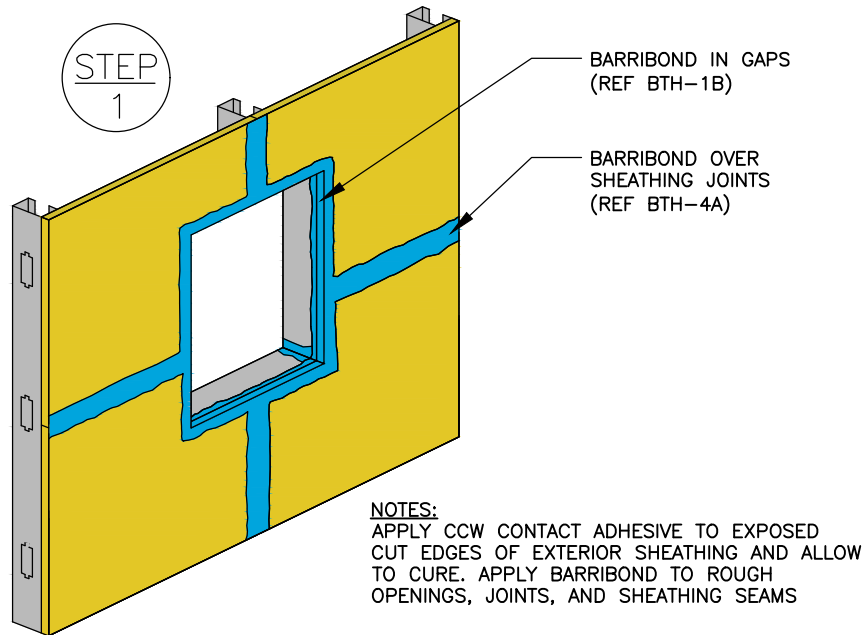
AS A MANUFACTURER OF CONSTRUCTION MATERIALS,
CARLISLE, DOES NOT ASSUME RESPONSIBILITY FOR ERRORS
IN DESIGN OR ENGINEERING. ARCHITECT OR OWNERS
REPRESENTATIVE MUST VERIFY SUITABILITY OF DETAILS.

BTH-5C

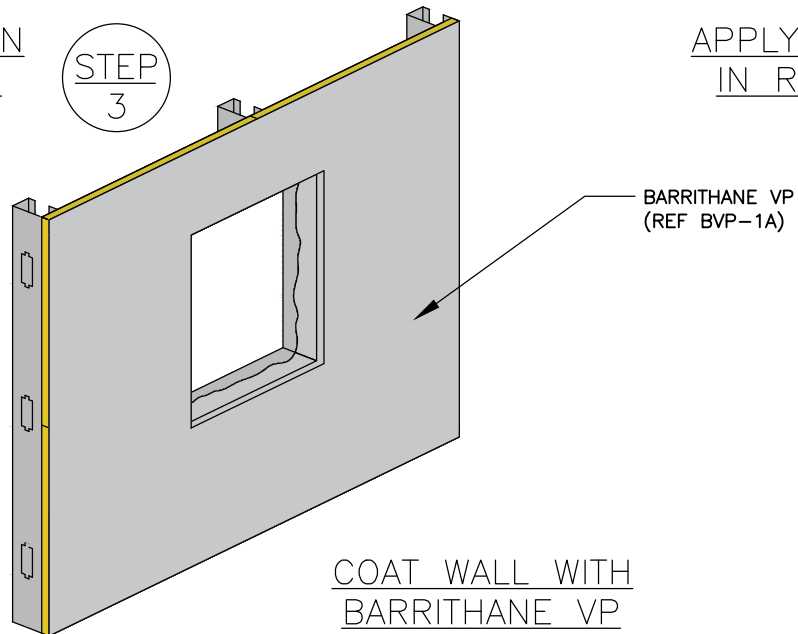
BARRITHANE VP
PUNCHED WINDOW — HEAD

CARLISLE
COATINGS & WATERPROOFING

© 2019 CARLISLE CORPORATION



APPLY BARRIBOND IN
CRACKS AND GAPS



APPLY BARRITHANE VP
IN ROUGH OPENING

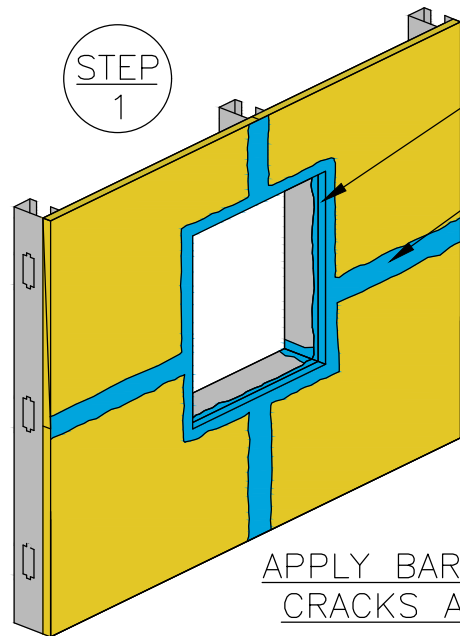
AS A MANUFACTURER OF CONSTRUCTION MATERIALS,
CARLISLE, DOES NOT ASSUME RESPONSIBILITY FOR ERRORS
IN DESIGN OR ENGINEERING. ARCHITECT OR OWNERS
REPRESENTATIVE MUST VERIFY SUITABILITY OF DETAILS.

BTH-5D

BARRITHANE VP LIQUID
FLASHING IN ROUGH OPENING

CARLISLE
COATINGS & WATERPROOFING

© 2018 CARLISLE CORPORATION



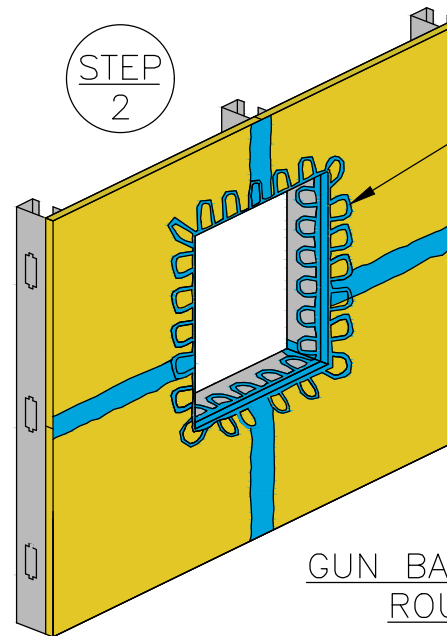
STEP
1

BARRIBOND IN GAPS
(REF BTH-1B)

BARRIBOND OVER
SHEATHING JOINTS
(REF BTH-4A)

NOTES:
APPLY CCW CONTACT
ADHESIVE TO EXPOSED CUT
EDGES OF GYPSUM BOARD
AND ALLOW TO CURE. APPLY
BARRIBOND (OR APPROVED
SEALANT) TO ROUGH
OPENINGS JOINTS AND
SHEATHING JOINTS

APPLY BARRIBOND IN
CRACKS AND GAPS

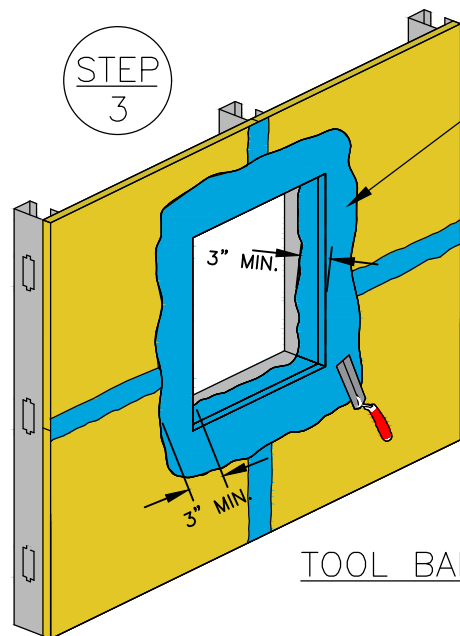


STEP
2

BARRIBOND
(REF BTH-1B)

NOTES:
APPLY BARRIBOND TO
SUBSTRATE IN A SERPENTINE
FASHION AROUND FACE OF
WALL AND INSIDE OF ROUGH
OPENING. DO NOT ALLOW
BARRIBOND TO SKIN OVER
PRIOR TO TOOLING PROCEDURE
DESCRIBED IN STEP 3.

GUN BARRIBOND AROUND
ROUGH OPENING

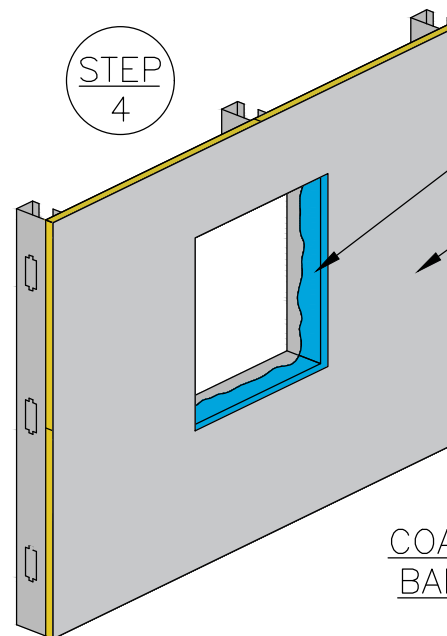


STEP
3

BARRIBOND, 40 MILS
(REF BTH-1B)

NOTES:
USING A TROWEL OR SIMILAR
TOOL EVENLY SPREAD
BARRIBOND OVER ENTIRE
OPENING AS SHOWN.
FINISHED MINIMUM 40 WET
MIL THICKNESS IS REQUIRED.

TOOL BARRIBOND



STEP
4

BARRIBOND

BARRITHANE VP
(REF BVP-1A)

COAT WALL WITH
BARRITHANE VP

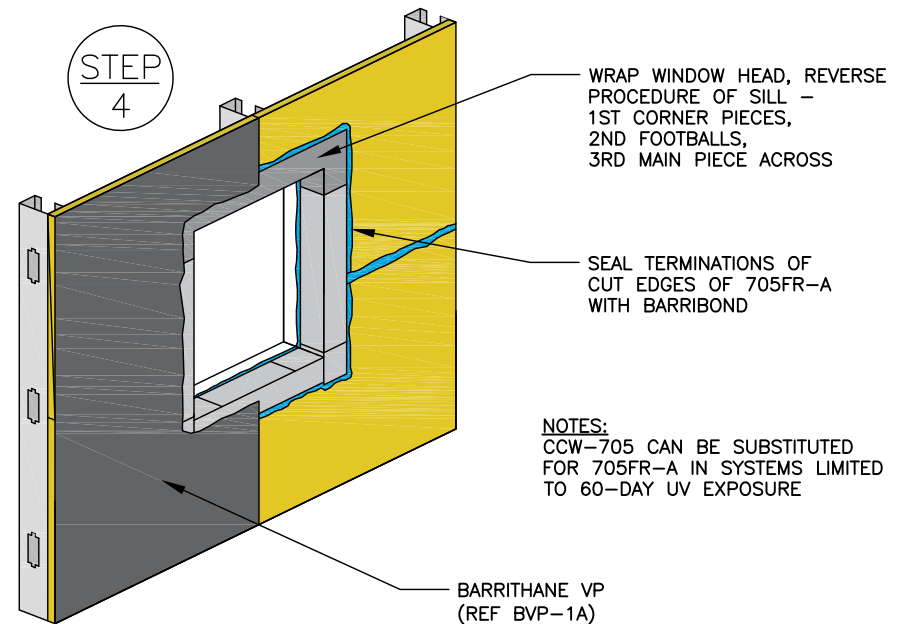
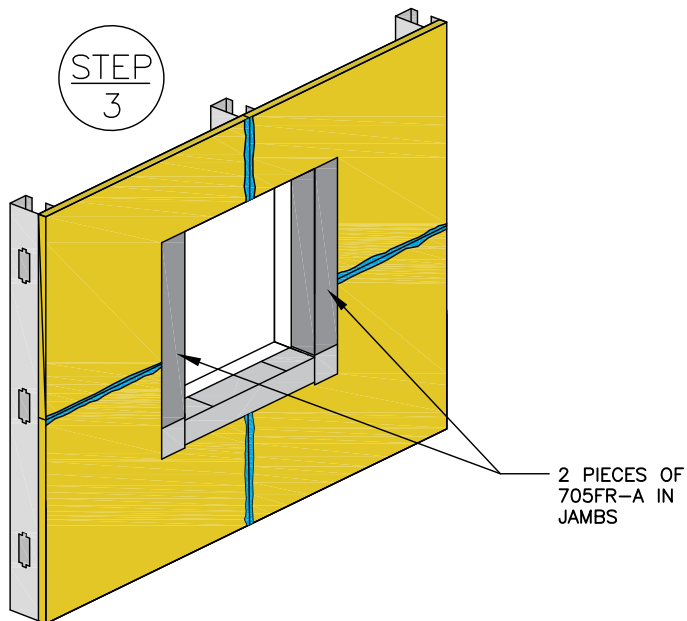
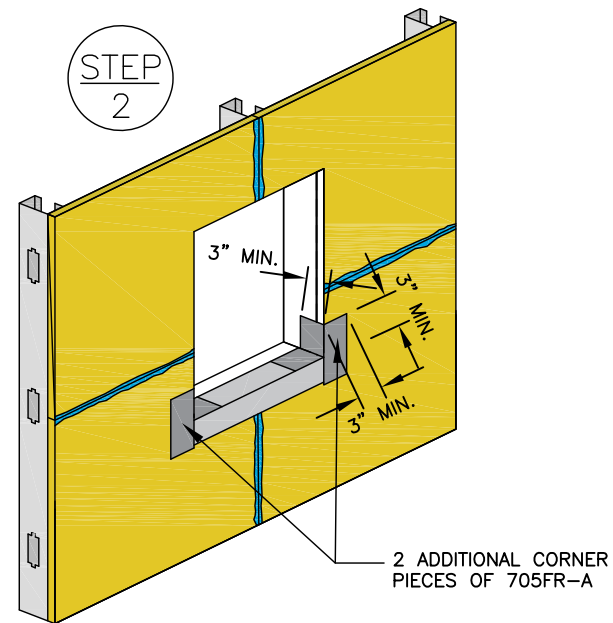
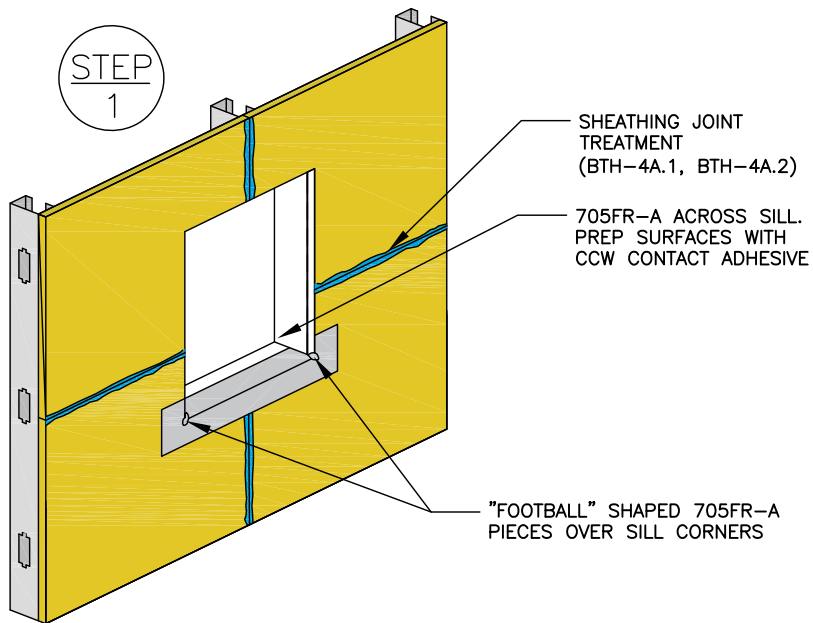
AS A MANUFACTURER OF CONSTRUCTION MATERIALS,
CARLISLE, DOES NOT ASSUME RESPONSIBILITY FOR ERRORS
IN DESIGN OR ENGINEERING. ARCHITECT OR OWNERS
REPRESENTATIVE MUST VERIFY SUITABILITY OF DETAILS.

BTH-5E

BARRIBOND LIQUID FLASHING
IN ROUGH OPENING

CARLISLE
COATINGS & WATERPROOFING

© 2018 CARLISLE CORPORATION



NOTES:
CCW-705 CAN BE SUBSTITUTED FOR 705FR-A IN SYSTEMS LIMITED TO 60-DAY UV EXPOSURE

AS A MANUFACTURER OF CONSTRUCTION MATERIALS, CARLISLE, DOES NOT ASSUME RESPONSIBILITY FOR ERRORS IN DESIGN OR ENGINEERING. ARCHITECT OR OWNERS REPRESENTATIVE MUST VERIFY SUITABILITY OF DETAILS.

BTH-5G

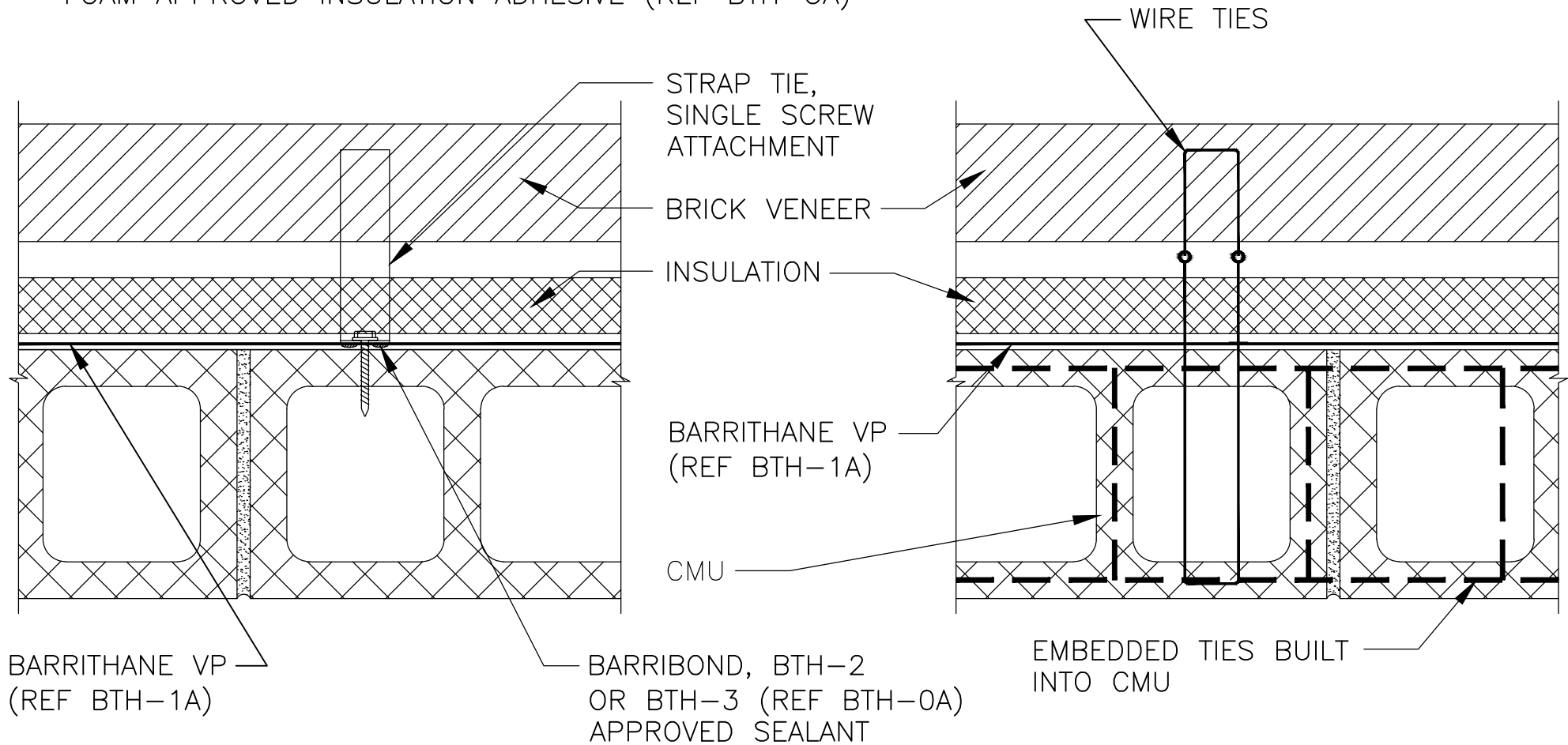
BARRITHANE VP/ 705FR-A AT ROUGH OPENING SILL, JAMB AND HEAD

CARLISLE
COATINGS & WATERPROOFING

© 2019 CARLISLE CORPORATION

NOTES:

1. INSTALL STRAP TIES AFTER BARRITHANE VP IS FULLY CURED
2. MORTAR JOINTS SHALL BE STRUCK FLUSH, FREE OF VOIDS
3. MORTAR DROPPINGS SHALL BE CLEANED FROM TIES AND SURFACES BEFORE BARRITHANE VP INSTALLATION
4. INSULATION MAY BE SECURED WITH BARRIBOND OR A BTH-A FOAM APPROVED INSULATION ADHESIVE (REF BTH-OA)



AS A MANUFACTURER OF CONSTRUCTION MATERIALS, CARLISLE, DOES NOT ASSUME RESPONSIBILITY FOR ERRORS IN DESIGN OR ENGINEERING. ARCHITECT OR OWNERS REPRESENTATIVE MUST VERIFY SUITABILITY OF DETAILS.

BTH-6B

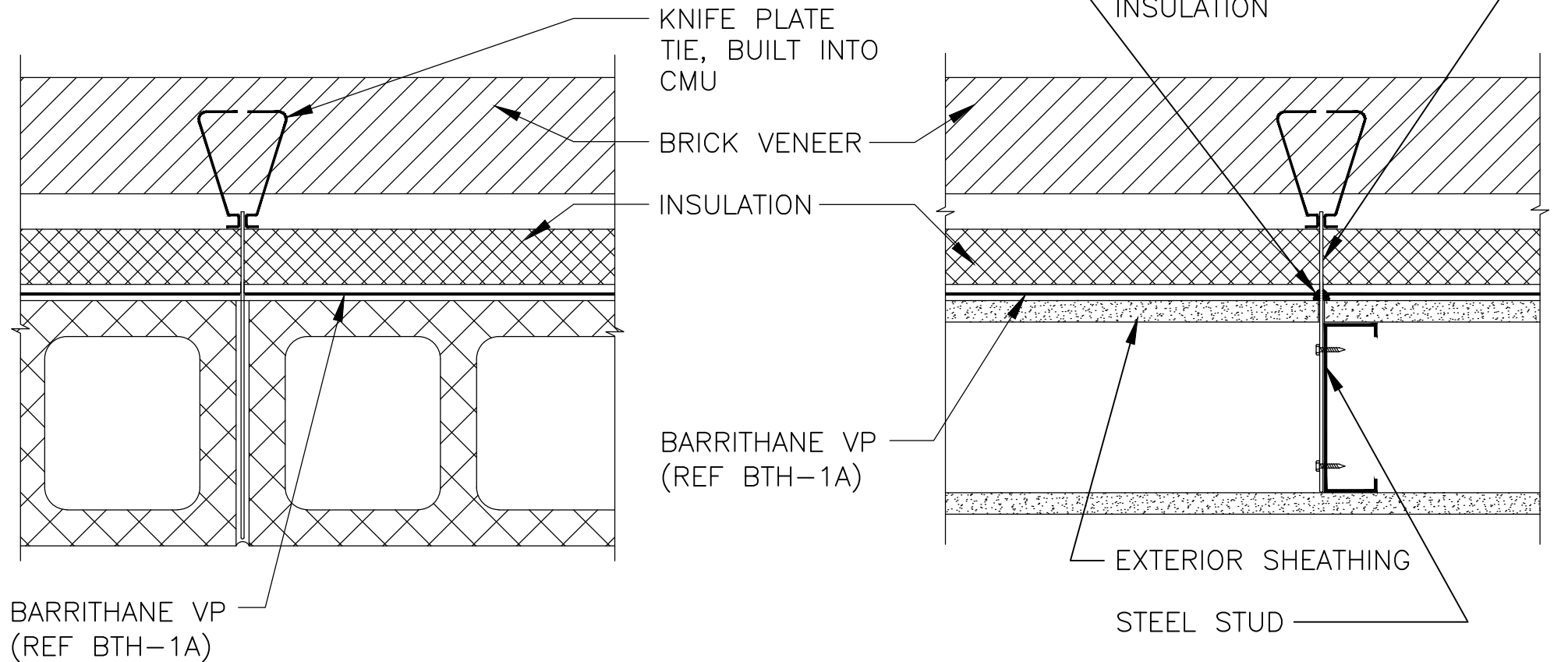
BARRITHANE VP
BRICK TIES – CMU

CARLISLE
COATINGS & WATERPROOFING

© 2018 CARLISLE CORPORATION

NOTES:

1. TIES ARE IN PLACE BEFORE BARRITHANE VP INSTALLATION
2. ON CMU – MORTAR JOINTS SHALL BE STRUCK FLUSH, FREE OF VOIDS AND MORTAR DROPPINGS SHALL BE CLEANED FROM TIES AND SURFACES BEFORE BARRITHANE VP INSTALLATION
3. INSULATION MAY BE SECURED WITH BARRIBOND OR A BTH-A FOAM APPROVED INSULATION ADHESIVE (REF BTH-0A)



AS A MANUFACTURER OF CONSTRUCTION MATERIALS, CARLISLE, DOES NOT ASSUME RESPONSIBILITY FOR ERRORS IN DESIGN OR ENGINEERING. ARCHITECT OR OWNERS REPRESENTATIVE MUST VERIFY SUITABILITY OF DETAILS.

BTH-6C

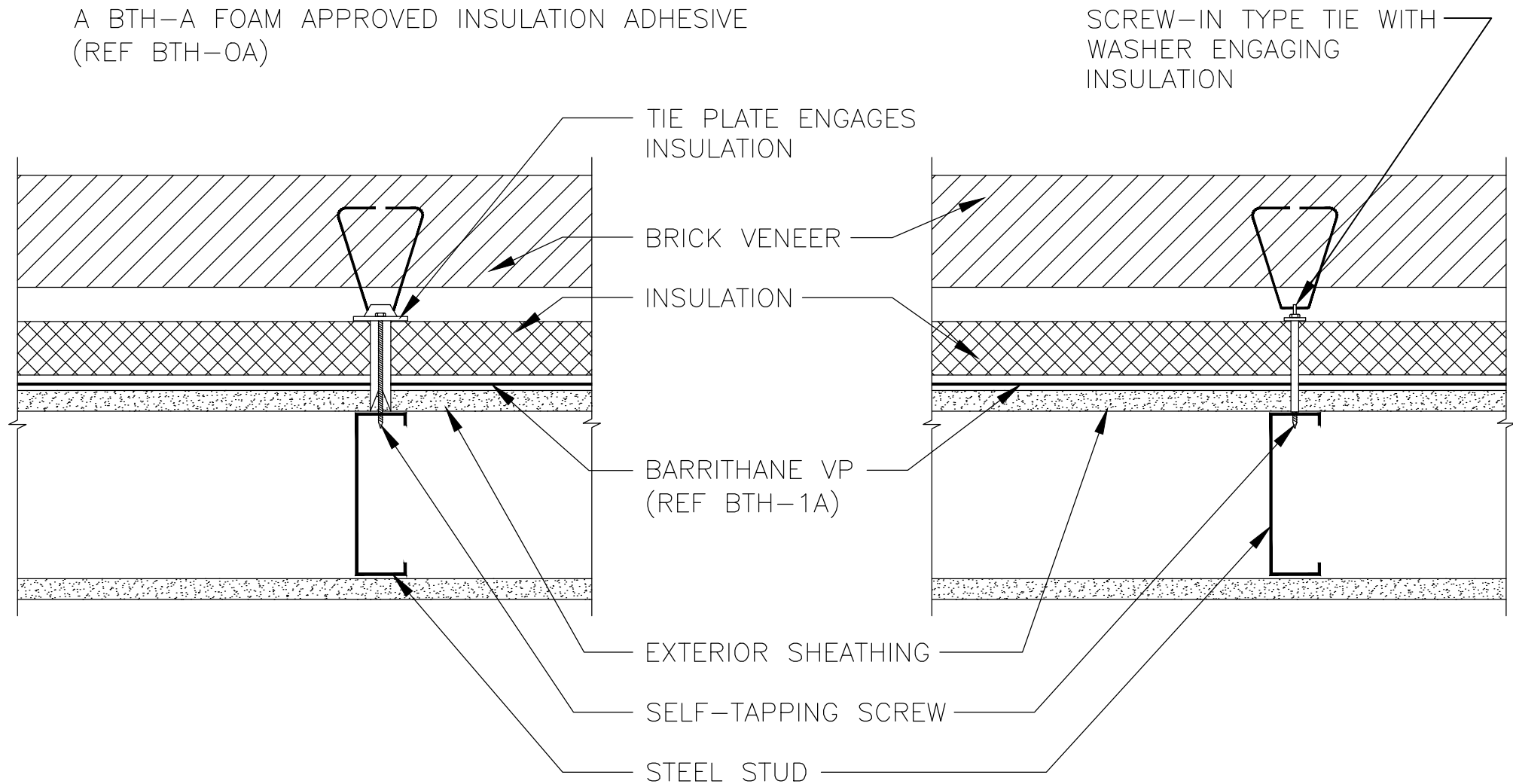
BARRITHANE VP KNIFE PLATE
TYPE TIES CMU AND
EXTERIOR SHEATHING

CARLISLE
COATINGS & WATERPROOFING

© 2018 CARLISLE CORPORATION

NOTES:

1. DRIVE FASTENERS STRAIGHT, DO NOT OVER-DRIVE
2. SEAL ALL HOLES FROM MIS-DRIVEN FASTENERS WITH SPRAY FOAM
3. INSULATION MAY BE SECURED WITH BARRIBOND OR A BTH-A FOAM APPROVED INSULATION ADHESIVE (REF BTH-0A)



AS A MANUFACTURER OF CONSTRUCTION MATERIALS, CARLISLE, DOES NOT ASSUME RESPONSIBILITY FOR ERRORS IN DESIGN OR ENGINEERING. ARCHITECT OR OWNERS REPRESENTATIVE MUST VERIFY SUITABILITY OF DETAILS.

BTH-6D

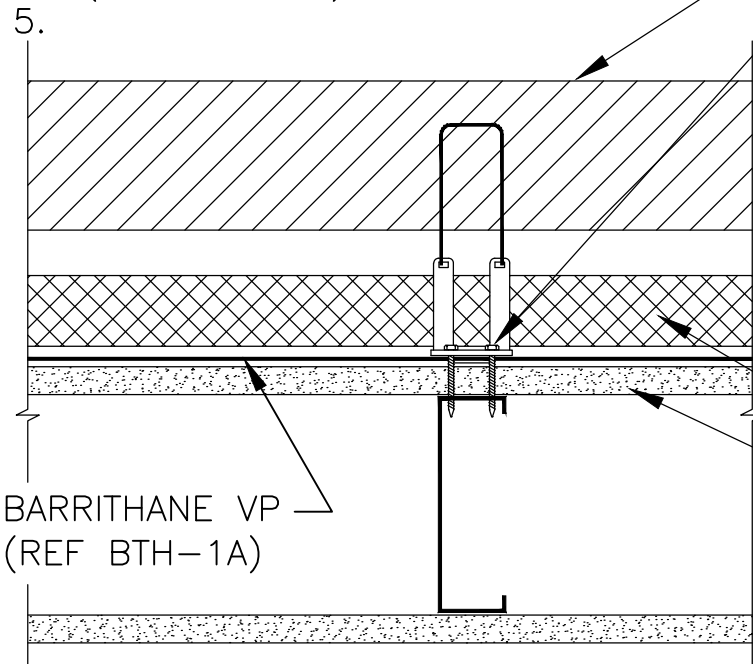
BRICK TIES, ATTACHED TO STUD
THROUGH INSULATION AND
EXTERIOR SHEATHING

CARLISLE
COATINGS & WATERPROOFING

© 2018 CARLISLE CORPORATION

NOTES:

1. INSTALL TIES AFTER BARRITHANE VP IS FULLY CURED
2. NON-SPIKED TIE PLATES SEAT FIRMLY IN BARRITHANE VP, FORMING SEAL WITHOUT ADDITIONAL DETAILING
3. SPIKED TIE PLATES REQUIRE EXTRA DETAILING WITH SEALANT AS SHOWN
4. SEAL ALL HOLES FROM MIS-DRIVEN FASTENERS WITH BARRIBOND, BTH-2 OR BTH-3 APPROVED SEALANT
4. INSULATION MAY BE SECURED WITH BARRIBOND OR A BTH-A FOAM APPROVED INSULATION ADHESIVE (REF BTH-0A)



BRICK VENEER

SELF-TAPPING, HEX HEAD SCREWS WITH RUBBER WASHERS

EXTERIOR SHEATHING

STEEL STUD

BRICK VENEER

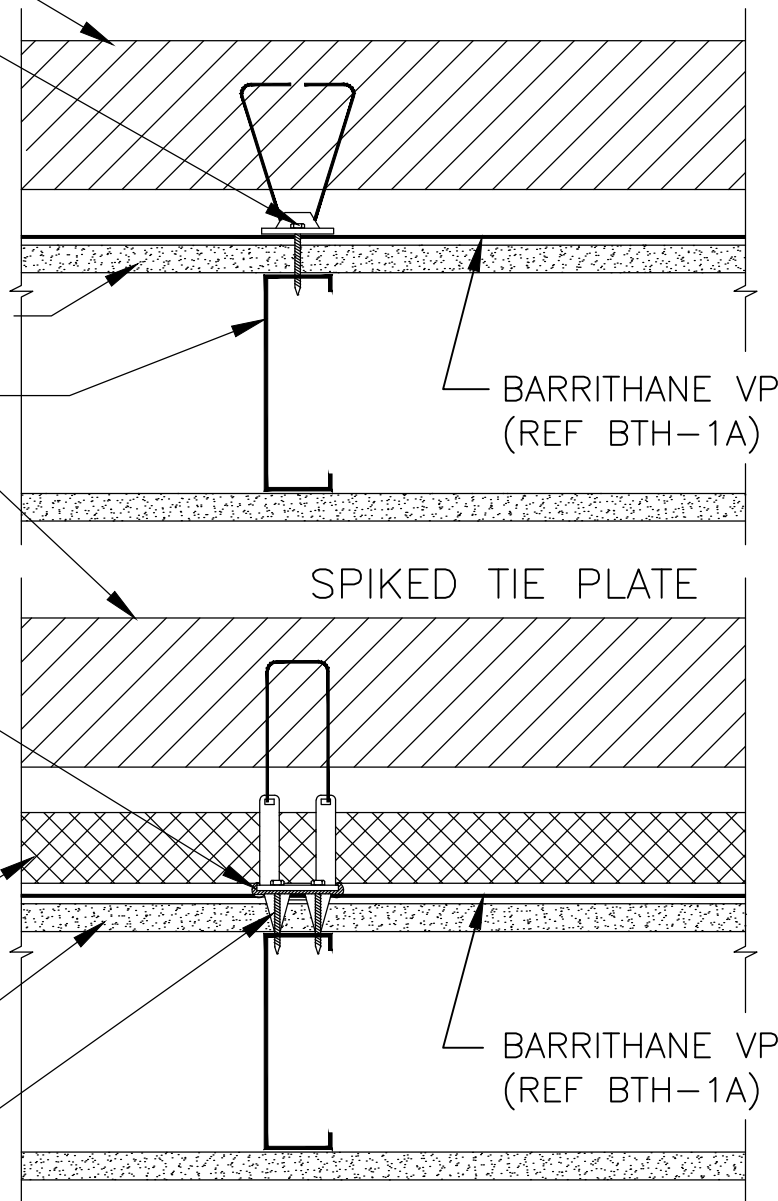
SELF-TAPPING, HEX HEAD SCREWS WITH RUBBER WASHERS

BARRIBOND, BTH-2 OR BTH-3 APPROVED SEALANT (REF BTH-0A)

INSULATION

EXTERIOR SHEATHING

SPIKE SEAT ON STEEL STUD



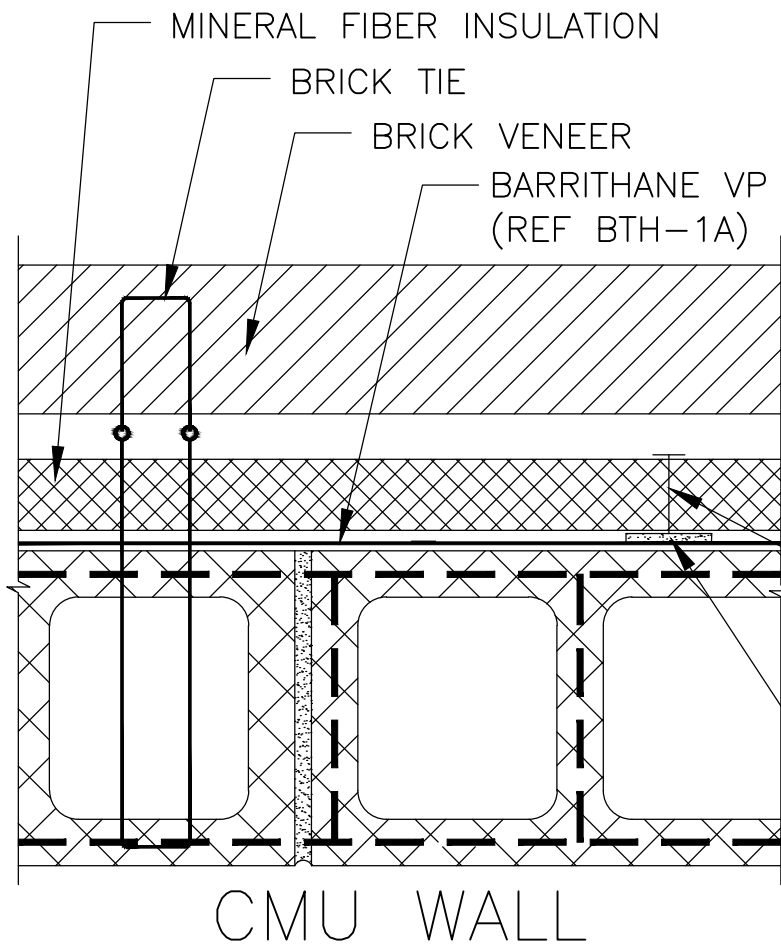
AS A MANUFACTURER OF CONSTRUCTION MATERIALS, CARLISLE, DOES NOT ASSUME RESPONSIBILITY FOR ERRORS IN DESIGN OR ENGINEERING. ARCHITECT OR OWNERS REPRESENTATIVE MUST VERIFY SUITABILITY OF DETAILS.

BTH-6E

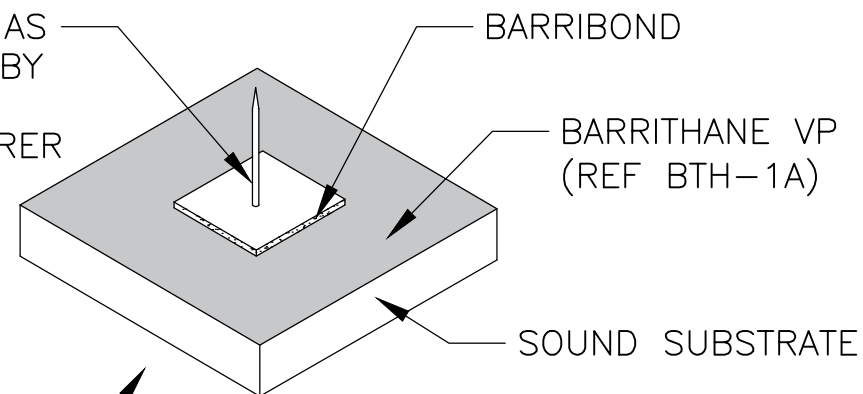
BARRITHANE VP 2-SCREW BRICK TIES, ATTACHMENT TO STUD THROUGH EXTERIOR SHEATHING

CARLISLE
COATINGS & WATERPROOFING

© 2018 CARLISLE CORPORATION

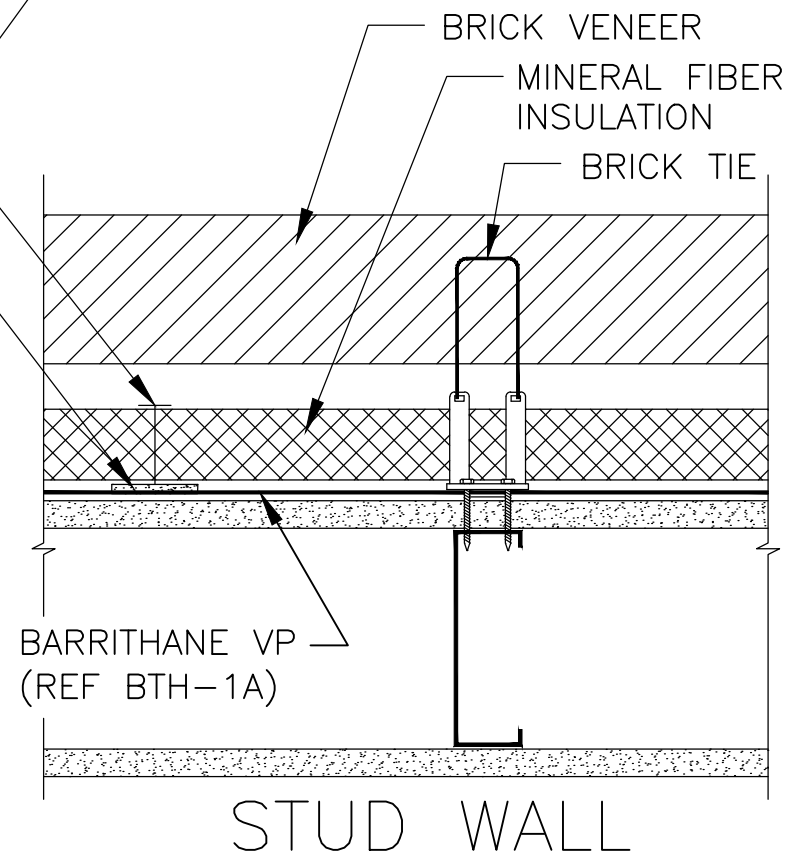


STICK PIN, AS APPROVED BY INSULATION MANUFACTURER



STICK PIN

BARRIBOND



NOTES:

1. BARRIBOND IS APPROVED FOR ADHERING STICK PINS TO CURED BARRITHANE VP
2. FOLLOW INSULATION MANUFACTURER'S RECOMMENDATION FOR STICK PIN SELECTION AND PLACEMENT.
3. ADHERED STICK PINS ARE INTENDED FOR ANCILLARY SECUREMENT OF INSULATION. PRIMARY ATTACHMENT IS PROVIDED BY MECHANICAL CONNECTION SUCH AS CAPPED SCREWS OR CLADDING ATTACHMENT HARDWARE.

AS A MANUFACTURER OF CONSTRUCTION MATERIALS, CARLISLE, DOES NOT ASSUME RESPONSIBILITY FOR ERRORS IN DESIGN OR ENGINEERING. ARCHITECT OR OWNERS REPRESENTATIVE MUST VERIFY SUITABILITY OF DETAILS.

BTH-6F

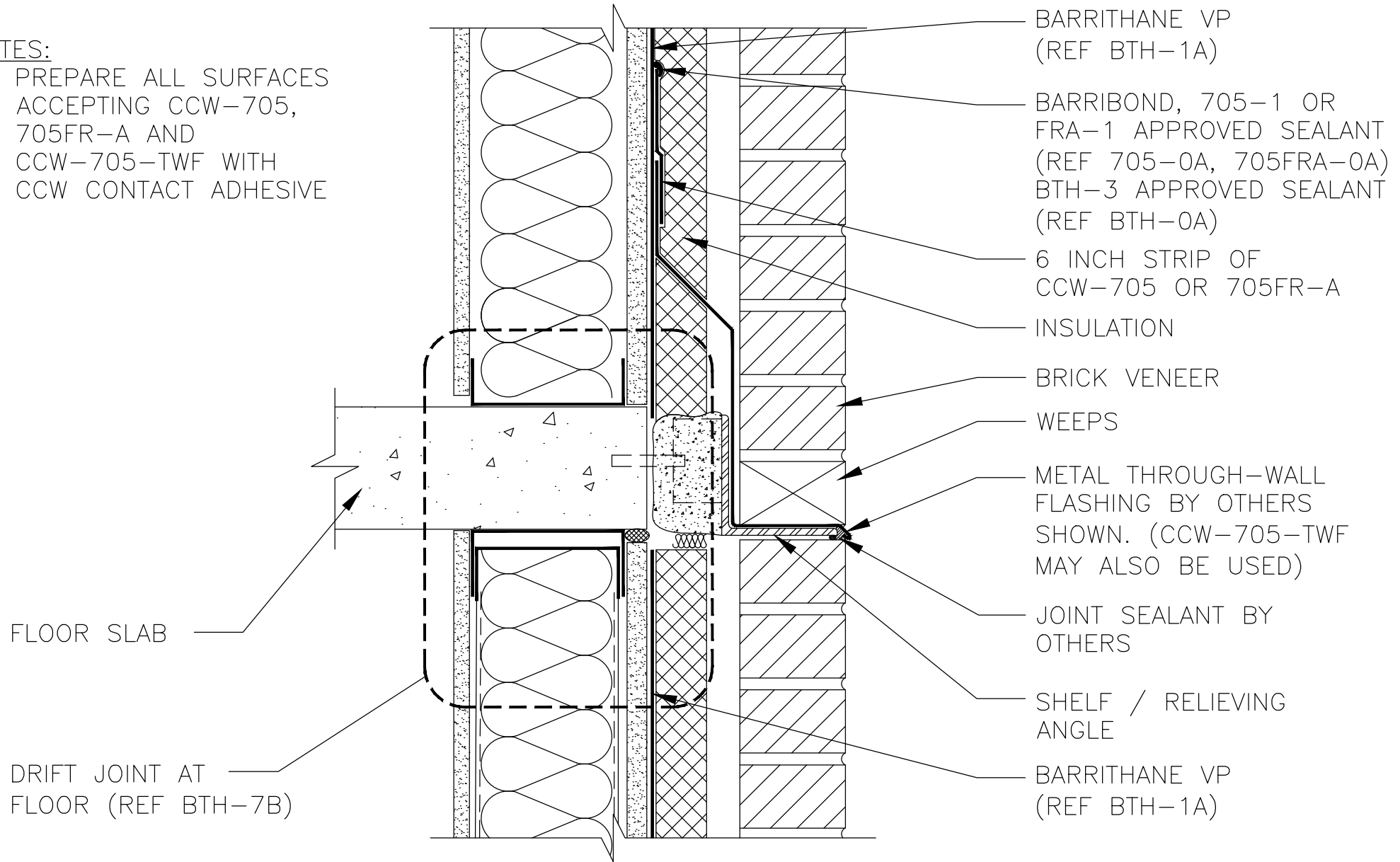
BARRITHANE VP/ BARRIBOND
WITH STICK PINS

CARLISLE
COATINGS & WATERPROOFING

© 2018 CARLISLE CORPORATION

NOTES:

1. PREPARE ALL SURFACES
ACCEPTING CCW-705,
705FR-A AND
CCW-705-TWF WITH
CCW CONTACT ADHESIVE



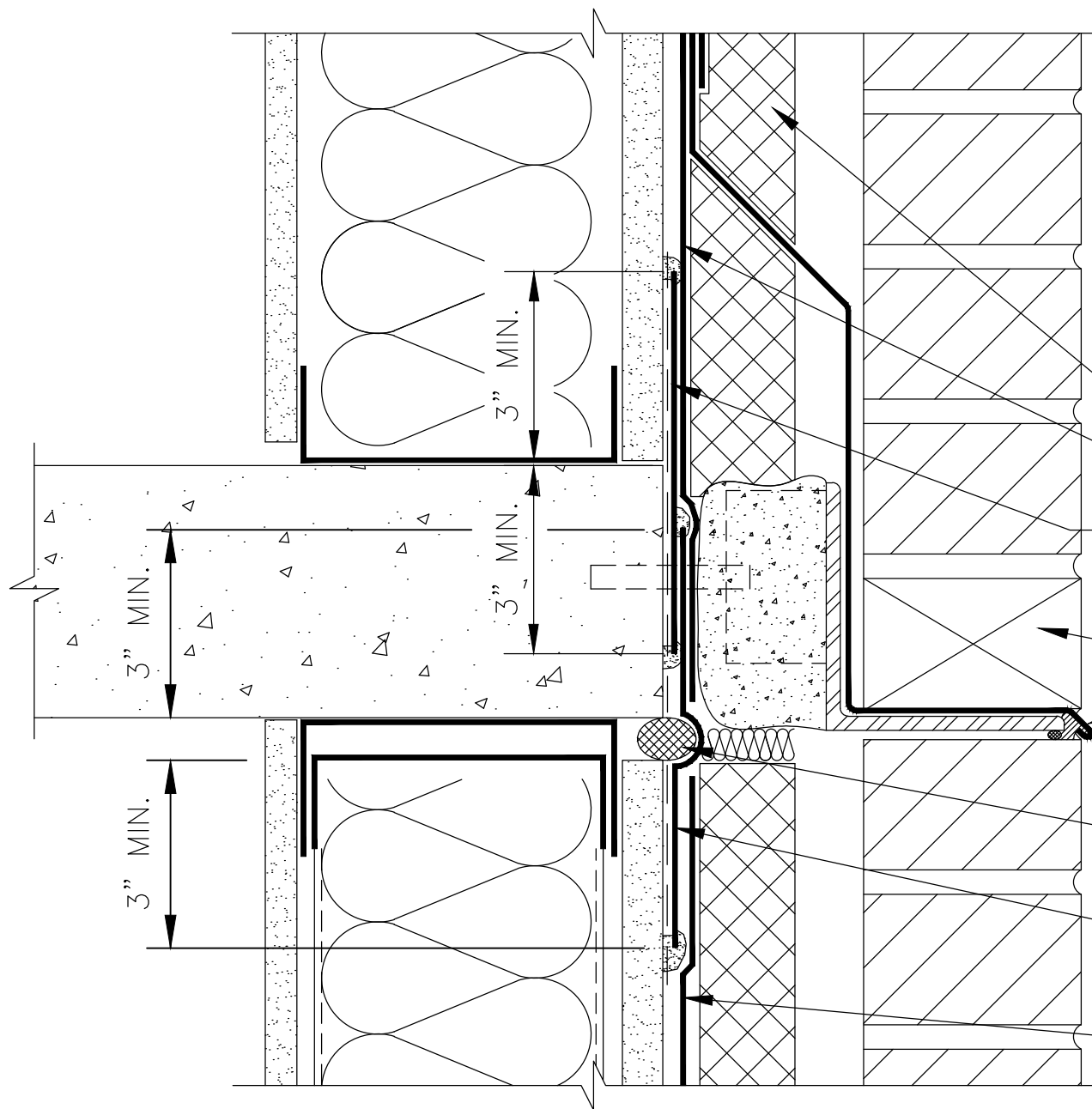
AS A MANUFACTURER OF CONSTRUCTION MATERIALS, CARLISLE, DOES NOT ASSUME RESPONSIBILITY FOR ERRORS IN DESIGN OR ENGINEERING. ARCHITECT OR OWNERS REPRESENTATIVE MUST VERIFY SUITABILITY OF DETAILS.

BTH-7A

BARRITHANE VP
SHELF ANGLE

CARLISLE
COATINGS & WATERPROOFING

© 2018 CARLISLE CORPORATION



NOTES:

1. ALLOWABLE JOINT MOVEMENT VARIES WITH GEOMETRY
2. ALLOW BARRITHANE VP TO CURE FULLY BEFORE INSTALLING SELF-ADHERED FLASHING OVER SURFACE
3. PREPARE ALL SURFACES ACCEPTING CCW-705, 705FR-A AND CCW-705-TWF WITH CCW CONTACT ADHESIVE

INSULATION

BARRITHANE VP (REF BTH-1A)

CCW-705 OR 705FR-A
(REF BTH-2A, BTH-2B)

WEEPS

METAL THROUGH-WALL
FLASHING BY OTHERS SHOWN
(CCW-705-TWF MAY ALSO
BE USED)

BACKER ROD, PROTRUDING
1/2 INCH MINIMUM

CCW-705 OR 705FR-A
(REF BTH-2A, BTH-2B)

BARRITHANE VP (REF BTH-1A)

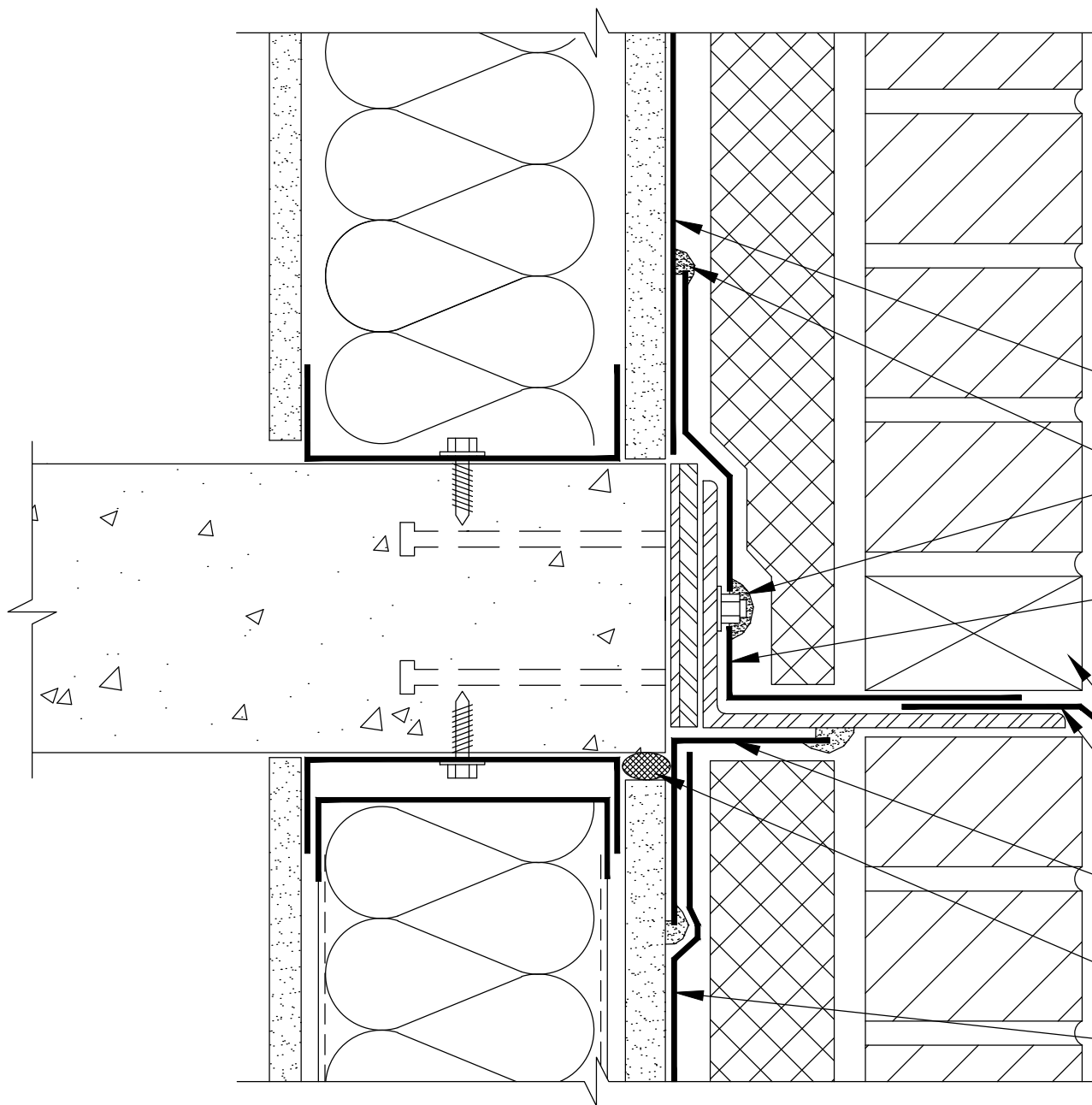
AS A MANUFACTURER OF CONSTRUCTION MATERIALS, CARLISLE, DOES NOT ASSUME RESPONSIBILITY FOR ERRORS IN DESIGN OR ENGINEERING. ARCHITECT OR OWNERS REPRESENTATIVE MUST VERIFY SUITABILITY OF DETAILS.

BTH-7B

BARRITHANE VP
DRIFT JOINT AT FLOOR

CARLISLE
COATINGS & WATERPROOFING

© 2018 CARLISLE CORPORATION



NOTES:

1. ALLOWABLE JOINT MOVEMENT VARIES WITH GEOMETRY
2. ALLOW BARRITHANE VP TO CURE FULLY BEFORE INSTALLING SELF-ADHERED FLASHING OVER SURFACE
3. PREPARE ALL SURFACES ACCEPTING CCW-705, 705FR-A AND CCW-705-TWF WITH CCW CONTACT ADHESIVE

BARRITHANE VP
(REF BTH-1A)

BARRIBOND OR
705-1 APPROVED SEALANT
(REF 705-0A)

CCW-705-TWF CUT AND FIT
OVER BOLT HEADS
(TERMINATE 1/2" MIN. FROM
EXTERIOR)

WEEPS

DRIP EDGE

CCW-705 OR 705FR-A
(REF BTH-2A, BTH-2B)

BACKER ROD

BARRITHANE VP
(REF BTH-1A)

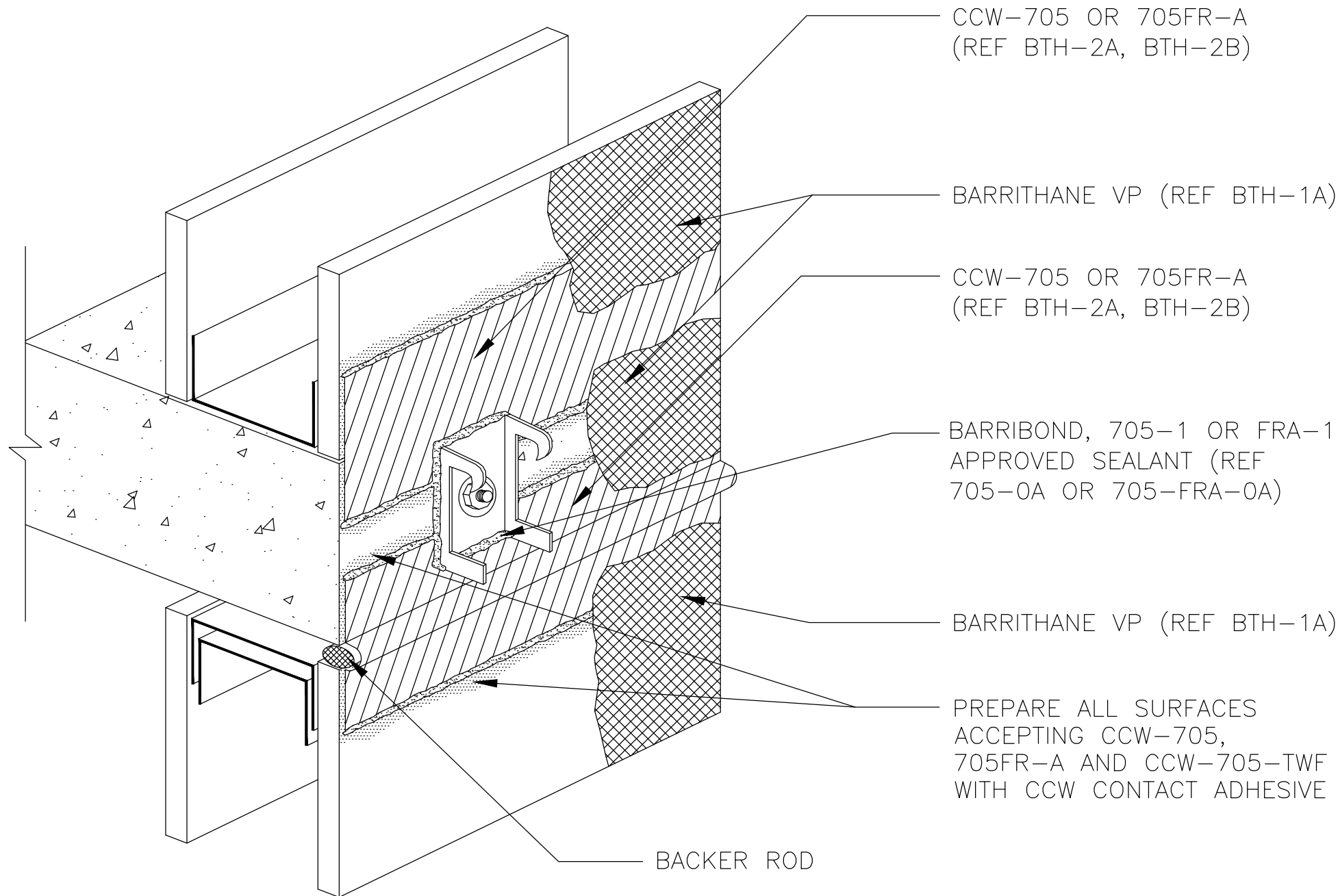
AS A MANUFACTURER OF CONSTRUCTION MATERIALS, CARLISLE, DOES NOT ASSUME RESPONSIBILITY FOR ERRORS IN DESIGN OR ENGINEERING. ARCHITECT OR OWNERS REPRESENTATIVE MUST VERIFY SUITABILITY OF DETAILS.

BTH-7C

BARRITHANE VP SHELF ANGLE
INSTALLED BEFORE AVB

CARLISLE
COATINGS & WATERPROOFING

© 2018 CARLISLE CORPORATION



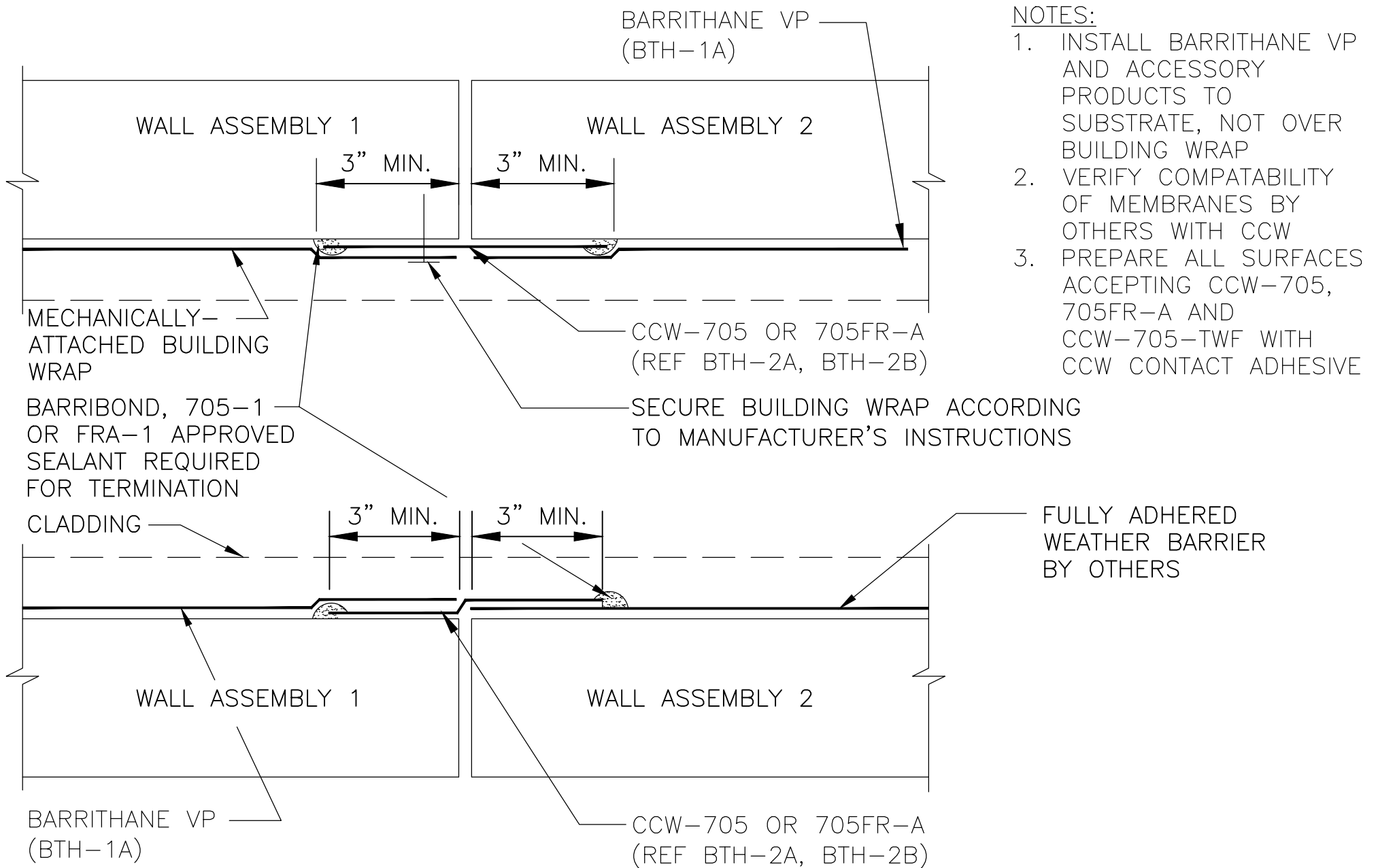
AS A MANUFACTURER OF CONSTRUCTION MATERIALS,
CARLISLE, DOES NOT ASSUME RESPONSIBILITY FOR ERRORS
IN DESIGN OR ENGINEERING. ARCHITECT OR OWNERS
REPRESENTATIVE MUST VERIFY SUITABILITY OF DETAILS.

BTH-7D

ISOMETRIC SHELF ANGLE

CARLISLE
COATINGS & WATERPROOFING

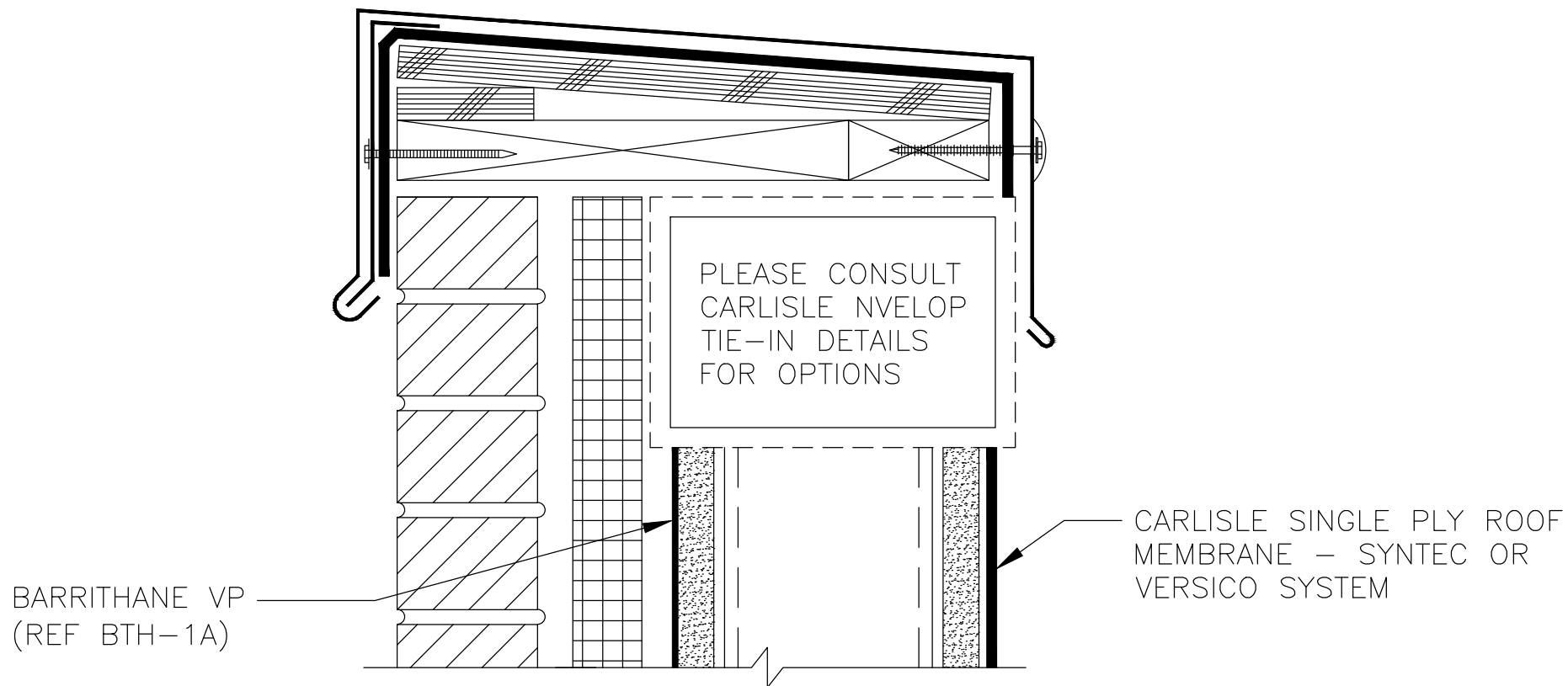
© 2018 CARLISLE CORPORATION



AS A MANUFACTURER OF CONSTRUCTION MATERIALS, CARLISLE, DOES NOT ASSUME RESPONSIBILITY FOR ERRORS IN DESIGN OR ENGINEERING. ARCHITECT OR OWNERS REPRESENTATIVE MUST VERIFY SUITABILITY OF DETAILS.

BTH-9A

BARRITHANE VP
TERMINATION AT WEATHER BARRIER
BY OTHERS



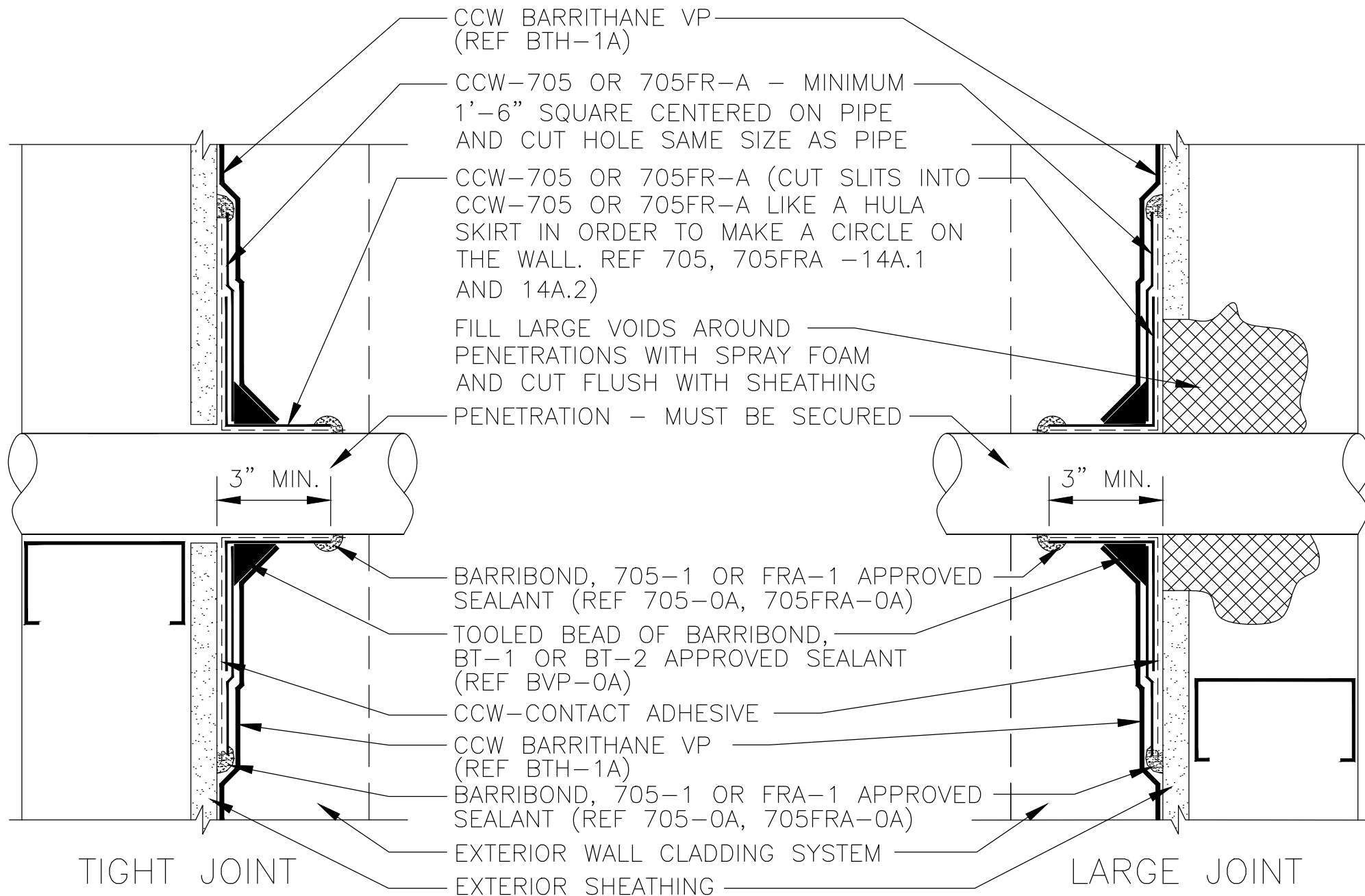
AS A MANUFACTURER OF CONSTRUCTION MATERIALS,
CARLISLE, DOES NOT ASSUME RESPONSIBILITY FOR ERRORS
IN DESIGN OR ENGINEERING. ARCHITECT OR OWNERS
REPRESENTATIVE MUST VERIFY SUITABILITY OF DETAILS.

BTH-11A

BARRITHANE VP TIE-IN TO
CCM ROOF AT PARAPET

CARLISLE
COATINGS & WATERPROOFING

© 2018 CARLISLE CORPORATION



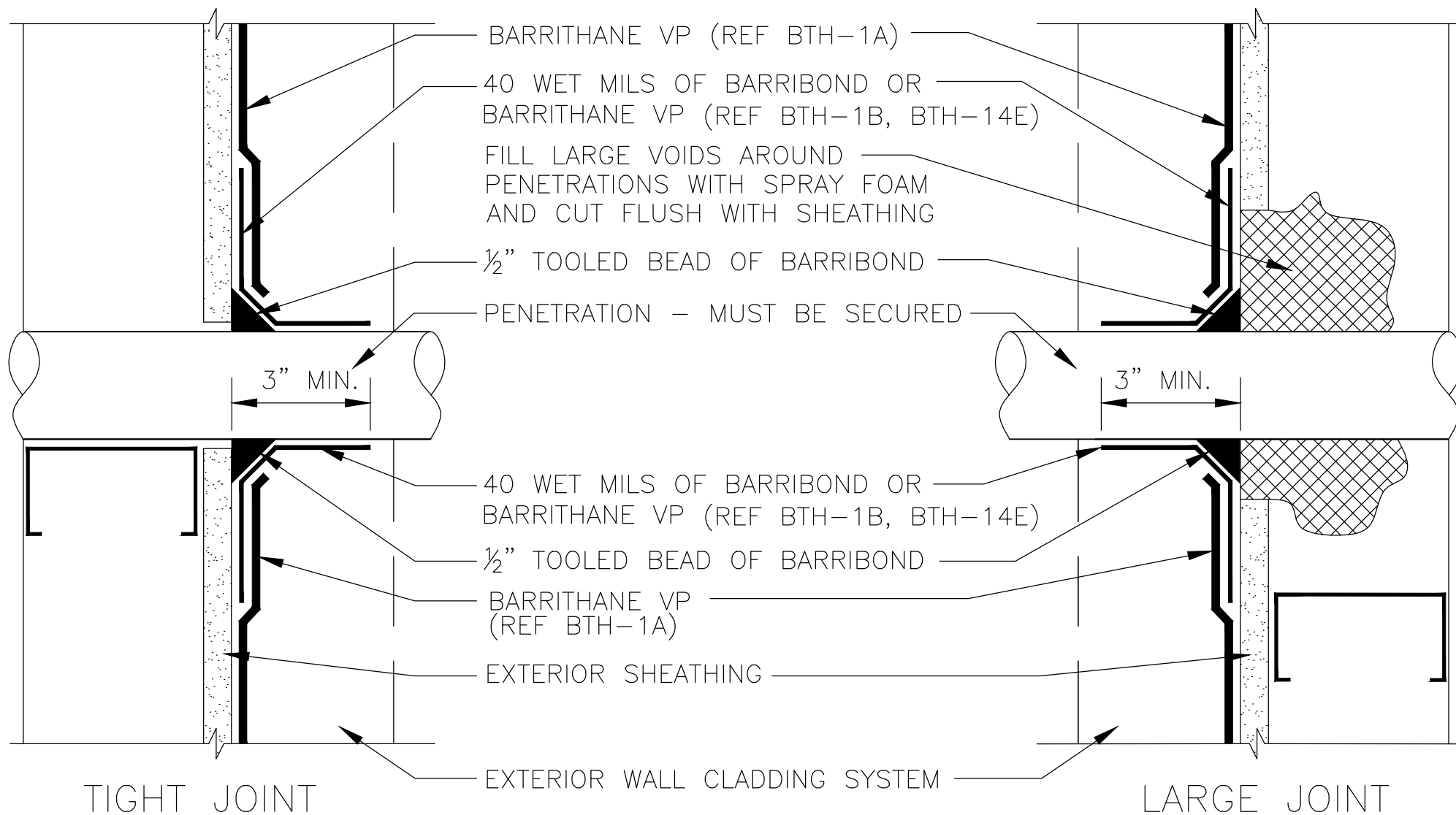
AS A MANUFACTURER OF CONSTRUCTION MATERIALS, CARLISLE, DOES NOT ASSUME RESPONSIBILITY FOR ERRORS IN DESIGN OR ENGINEERING. ARCHITECT OR OWNERS REPRESENTATIVE MUST VERIFY SUITABILITY OF DETAILS.

BTH-14A

SELF-ADHERING SHEET
FLASHING AT PIPE PENETRATION

CARLISLE
COATINGS & WATERPROOFING

© 2018 CARLISLE CORPORATION



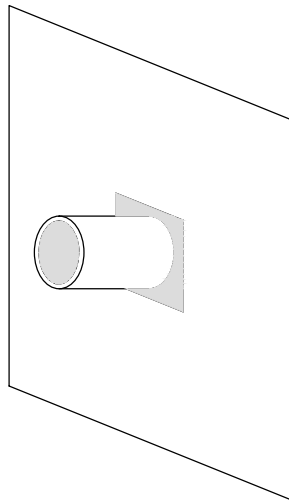
AS A MANUFACTURER OF CONSTRUCTION MATERIALS,
 CARLISLE, DOES NOT ASSUME RESPONSIBILITY FOR ERRORS
 IN DESIGN OR ENGINEERING. ARCHITECT OR OWNERS
 REPRESENTATIVE MUST VERIFY SUITABILITY OF DETAILS.

BTH-14B

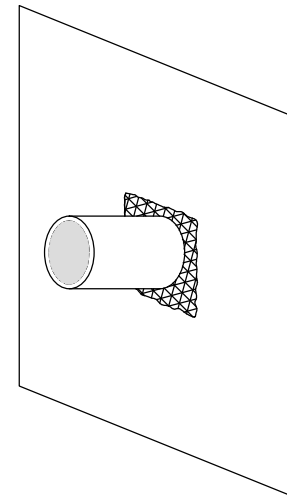
LIQUID FLASHING AT PIPE PENETRATION

CARLISLE
 COATINGS & WATERPROOFING

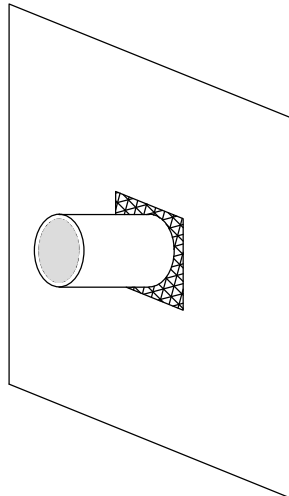
© 2018 CARLISLE CORPORATION



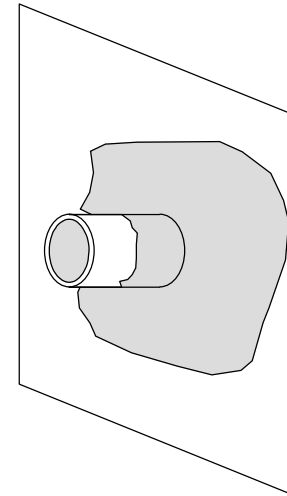
PIPE PENETRATION
WITH ROUGH GAP



FILL TIGHTER GAPS WITH
BARRIBOND. FILL ROUGH
GAPS WITH EXPANDING FOAM



SHAVE FOAM FLUSH
AFTER CURE



APPLY BARRIBOND OR
BARRITHANE VP AT 40 WET MILS

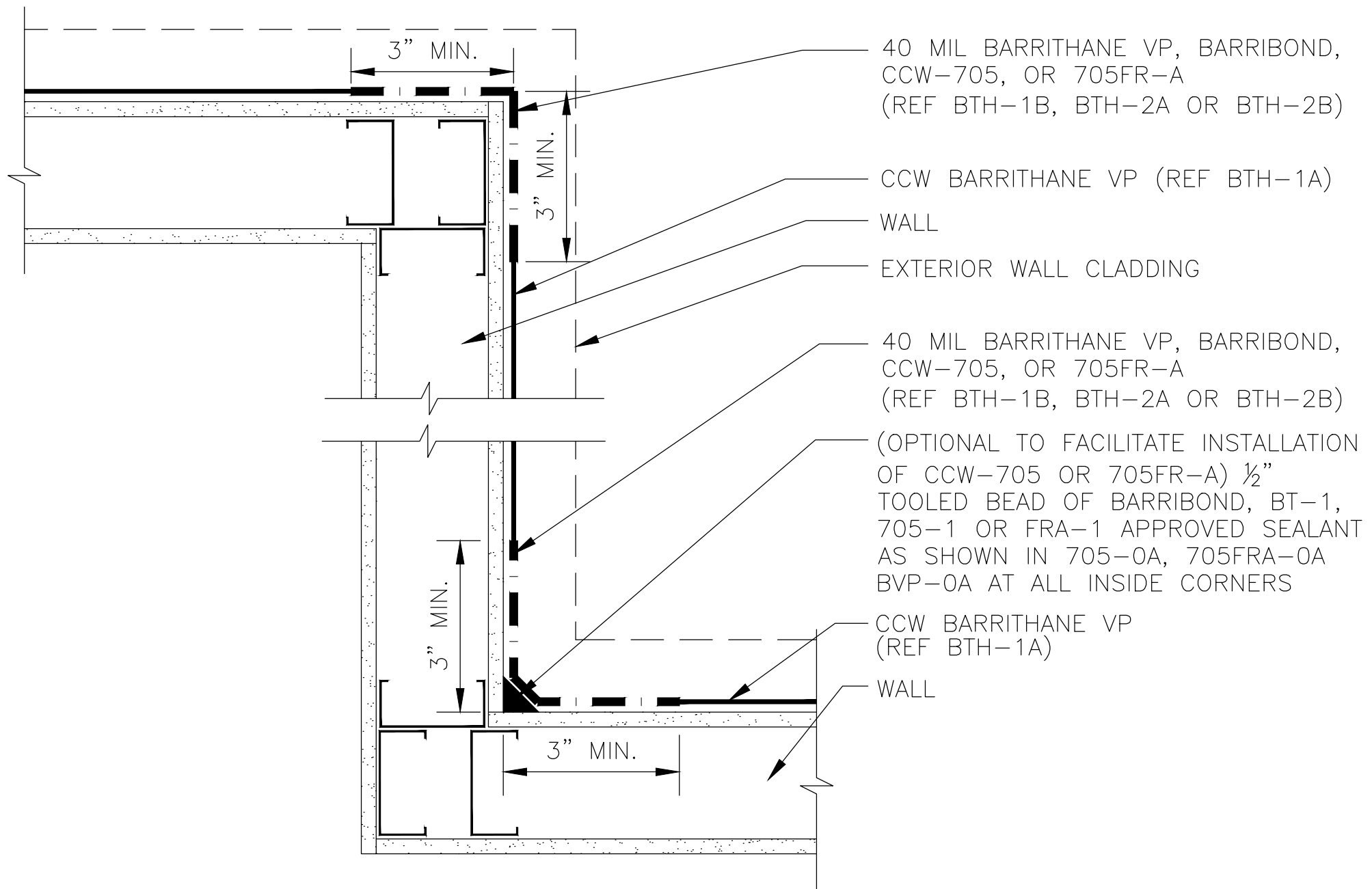
AS A MANUFACTURER OF CONSTRUCTION MATERIALS,
CARLISLE, DOES NOT ASSUME RESPONSIBILITY FOR ERRORS
IN DESIGN OR ENGINEERING. ARCHITECT OR OWNERS
REPRESENTATIVE MUST VERIFY SUITABILITY OF DETAILS.

BTH-14C

INSTALLATION SEQUENCE LIQUID
FLASHING AT PIPE PENETRATION

CARLISLE
COATINGS & WATERPROOFING

© 2018 CARLISLE CORPORATION



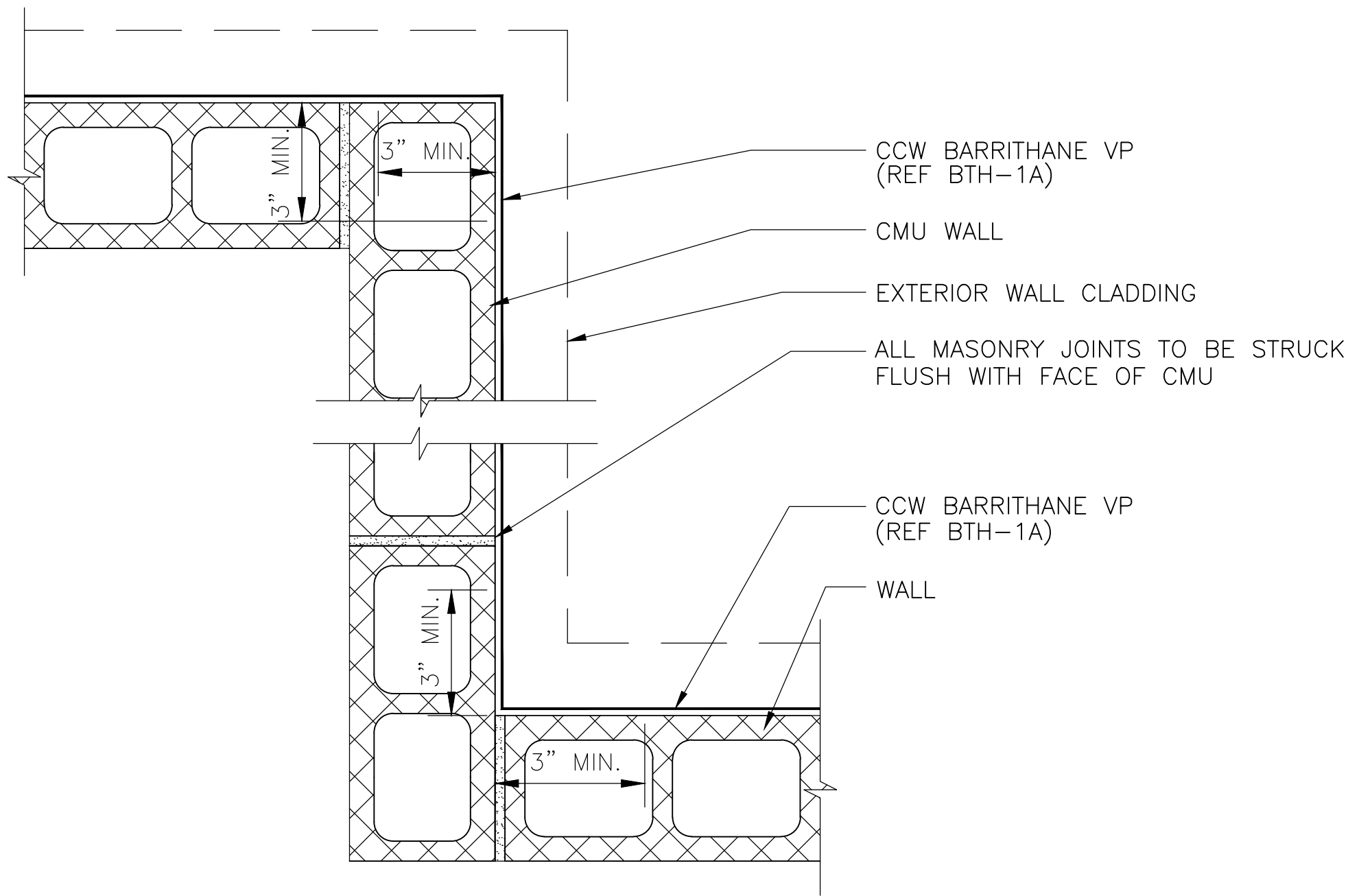
AS A MANUFACTURER OF CONSTRUCTION MATERIALS, CARLISLE, DOES NOT ASSUME RESPONSIBILITY FOR ERRORS IN DESIGN OR ENGINEERING. ARCHITECT OR OWNERS REPRESENTATIVE MUST VERIFY SUITABILITY OF DETAILS.

BTH-15A

INSIDE/OUTSIDE
CORNERS

CARLISLE
COATINGS & WATERPROOFING

© 2018 CARLISLE CORPORATION



AS A MANUFACTURER OF CONSTRUCTION MATERIALS,
CARLISLE, DOES NOT ASSUME RESPONSIBILITY FOR ERRORS
IN DESIGN OR ENGINEERING. ARCHITECT OR OWNERS
REPRESENTATIVE MUST VERIFY SUITABILITY OF DETAILS.

BTH-15B

INSIDE / OUTSIDE
CMU WALL CORNERS

CARLISLE
COATINGS & WATERPROOFING
© 2018 CARLISLE CORPORATION

NOTES:

1. ALL SURFACES ACCEPTING CCW-705, 705FR-A, CCW-705-TWF AND CCW MIRADRI-860/861 SHALL BE PREPARED WITH CCW CONTACT ADHESIVE

CCW-705 OR 705FR-A
(REF BTH-2A, BTH-2B)

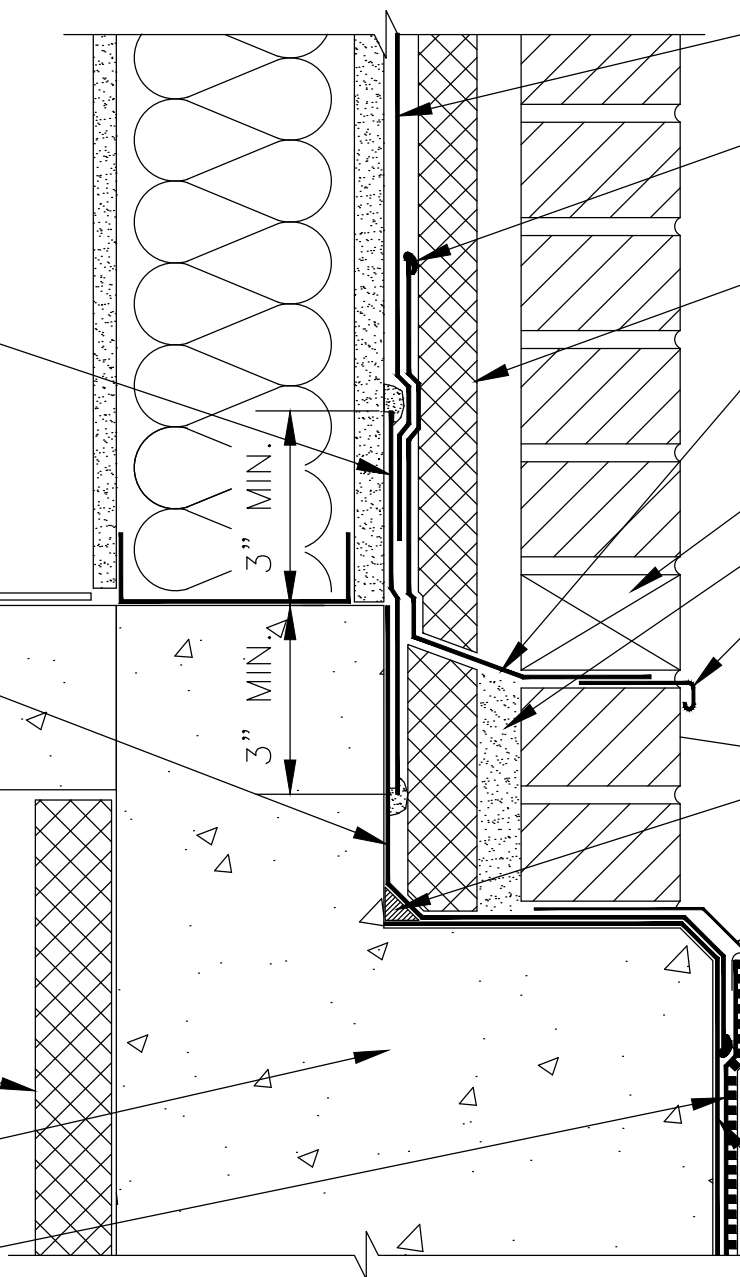
CCW MIRADRI 860/861
LAP 6" MINIMUM ONTO
BELOW GRADE
WATERPROOFING SYSTEM
AND TERMINATE WITH
MASTIC. PEEL BACK
DRAINAGE COMPOSITE FOR
ACCESS IF NECESSARY

SLAB

BELOW GRADE INSULATION.
R-VALUE TO CODE

FOUNDATION

MIRADRAIN DRAINAGE COMPOSITE



BARRITHANE VP
(REF BTH-1A)

BARRIBOND OR 705-1
APPROVED SEALANT
(REF 705-0A)

CAVITY INSULATION

CCW-705-TWF
(TERMINATE 1/2"
FROM EXTERIOR)

WEEPS

CAVITY GROUT SOLID

METAL DRIP EDGE
(BY OTHERS) EMBEDDED
IN SEALANT

GRADE

3/4" CANT BEAD OF
CCW-LM-800XL OR
CCW-201 SEALANT

METAL COUNTER-
FLASHING TO PROTECT
WATERPROOFING
TERMINATION

CCW-704 OR CCW-LM-
800XL MASTIC

CCW MIRADRI 860/861
OR BARRICOAT-S/R

AS A MANUFACTURER OF CONSTRUCTION MATERIALS,
CARLISLE, DOES NOT ASSUME RESPONSIBILITY FOR ERRORS
IN DESIGN OR ENGINEERING. ARCHITECT OR OWNERS
REPRESENTATIVE MUST VERIFY SUITABILITY OF DETAILS.

BTH-16A

BARRITHANE VP
FOUNDATION TIE-IN

CARLISLE
COATINGS & WATERPROOFING

© 2018 CARLISLE CORPORATION